



OFFSHORE CRUISER RACE WEEK 2026

Friday 19 June to Sunday 28 June 2026

Incorporating: The Channel Race

SAILING INSTRUCTIONS

The Organising Authority (OA) is the Royal Torbay Yacht Club (RTYC)

The notation [DP] in a rule in the NOR or SIs means that the penalty for a breach of that rule may, at the discretion of the protest committee, be less than disqualification. The notation [NP] in a rule means that a boat may not protest another boat for breaking that rule. This changes RRS 60.1(a).

1. RULES

The event will be governed by the rules as defined in:

- 1.1. The rules as defined in The Racing Rules of Sailing 2025-2028 including the Royal Yachting Association (RYA) prescription.
- 1.2. The Equipment Rules of Sailing 2025-2028, to the extent that they apply (available at [World Sailing - Equipment Rules of Sailing](#))
- 1.3. The applicable class and/or handicap system rules, including for IRC boats IRC Rule 2025, Parts A, B and C, but excluding rules 21.1.5(d) and (e). IRC Rule 2025
- 1.4. The World Sailing Offshore Special Regulations Monohulls Category 3 Monohulls with Life Raft 2024-2025. (available at [World Sailing - Offshore Special Regulations](#))
- 1.5. Cruisers shall comply with class rules and applicable rating/handicap system rules.
- 1.6. Between Sunset and Sunrise Part 2 of the Racing Rules of Sailing are replaced by the right of way rules of the International Regulations for Preventing Collisions at Sea (IRPCAS) and the applicable Government right of way rules.
- 1.7. All competing boats are required to comply with rule 10 of the IRPCAS, Traffic Separation Schemes (TSS), boats that break this rule may be penalised if protested and unable to prove their Track.
- 1.8. Competitors should note that the OA implements the RYA Racing Charter and that they will be expected to sail in compliance with it. The charter can be found at the front of the RYA edition of the Racing Rules of Sailing 2025-2028 or on the RYA website at [Racing Charter \(rya.org.uk\)](#)
- 1.9. [DP] Torbay Harbour Byelaws. (available at: [Tor Bay Harbour - Byelaws \(tor-bay-harbour.co.uk\)](#))

2. CHANGES TO SAILING INSTRUCTIONS

- 2.1. Any changes to the Sailing Instructions will be posted before 09:00 on the day it will take effect, except that any change to the schedule of races will be posted by 20:00 hours on the day before it will take effect.



3. COMMUNICATIONS WITH COMPETITORS

- 3.1. Notices to competitors will be posted on the official notice board on the event website [Offshore Week 2026 - Royal Torbay Yacht Club](#) unless otherwise stated.
- 3.2. All boats shall carry a VHF radio capable of communicating on channels 14,16, 65,72, 77.
- 3.3. Official Radio Communication with competitors will be on VHF ch 72 (although if there is congestion /interference then VHF ch 77 will be used temporarily). All competitors shall monitor channel 72 or its substitute for each race whenever possible, from before the start until reaching port as well as monitoring channel 16 which will act as a general safety channel.
- 3.4. Failure to broadcast by the RC or time it accurately, or failure to receive such broadcast will not be grounds for redress. This changes RRS 62.1 (a).
- 3.5. In accordance with RRS 20.4 (b) the use of VHF radio as an alternative communication is permitted.
- 3.6. [DP] While racing, except in an emergency, a boat shall not make voice or data transmissions and shall not receive voice or data communication that is not available to all boats. This restriction also applies to mobile telephones.
- 3.7. A competitor’s WhatsApp group may also be used, click [this link](#) to join details, providing notifications, Race Committee (RC) communications whilst ashore and protest notices. Failure to receive WhatsApp messages shall not be grounds for redress. This changes RRS 62.1(a).

4. CODE OF CONDUCT

- 4.1. [DP] Competitors and support persons shall comply with reasonable requests from race officials.

5. SIGNALS MADE ASHORE

Does not apply

6. SCHEDULE

- 6.1. The race committee reserves the right to change the race schedule dependent upon the prevailing weather and other conditions.
- 6.2. The race committee may also introduce an extra race any day if the circumstances allow.
- 6.3. Dates and scheduled Warning Signals of Races:

Date	Race	Scheduled time of Warning Signal (BST)
Friday 19 June	Race 1: Torquay to St. Peter Port (The Channel Race)	07:55
Saturday 20 June	St Peter Port Lay Day	-
Sunday 21 June	Race 2: St Peter Port to St Cast le Guildo	07:55
Monday 22 June	St Cast Lay Day	-
Tuesday 23 June	Race 3: St Cast le Guildo to Dahouet	07:55
Wednesday 24 June	Race 4: Dahouet to St Quay	14:55
Thursday 25 June	Race 5: St Quay to St Helier	07:55
Friday 26 June	St Helier Lay Day	-
Saturday 27 June	Race 6: St Helier to St Peter Port	07:25
Sunday 28 June	Race 7: St Peter Port to Channel Light	07:55

- 6.4. All times are British Summer Time (BST)



7. CLASS FLAGS

7.1. The class flag for both classes will be Numeral Pennant 1



8. RACING AREA

8.1. Racing will take place in the waters between Torbay, the Channel Islands and ports of Brittany including the English Channel.

9. THE COURSES

- 9.1. For the scheduled races, courses are described in Appendix A.
- 9.2. Any course diagrams shown in Appendix A are informational to aide identification of key elements and **NOT** for navigation. All Yachts are responsible for defining their own routes over the courses.
- 9.3. The course for any additional race scheduled by the RC which will be communicated via VHF and, if practical, the WhatsApp group.

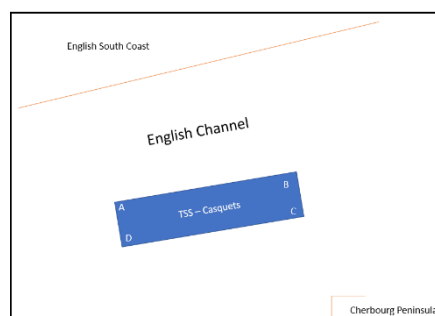
10. MARKS

- 10.1. Rounding marks for each race are as described Appendix A.
- 10.2. The start mark(s), if used, for each race are as described Appendix A and section 12.7 below.
- 10.3. The finish mark(s), if used, for each race are as described Appendix A.

11. OBSTRUCTIONS

- 11.1. A boat shall not enter an area designated as an Obstruction when racing. All Traffic Separation Schemes (TSS) are designated as Obstructions. The area of each Obstruction is a box; the coordinates of the corners are given below. The boundaries are the rhumb lines between the corners.
- 11.2. The following are obstructions –
 - a) Torbay Wave Buoy (yellow buoy with associated trailing buoys) serving as a wave monitor located at approximately 050°433N 003°517W.
 - b) TSS – Casquets (which is the local shipping zone which is known as the mid channel TSS) with corner coordinates as below:

Corner	Latitude	Longitude
A	50degs 03'.50N	002degs 57'.40W
B	50degs 08'.60N	002degs 28'.30W
C	49degs 51'.30N	002degs 21'.10W
D	49degs 46'.30N	002degs 50'.30W



- 11.3. [DP] The waters of Brittany, and the Channel Islands have many rocks, strong currents, fishing beds, etc. It is imperative that the skipper and crew make sure they are aware of all these hazards before and during the races and keep well clear.
- 11.4. [DP] When entering harbour areas, there are again many shoals and fishing nets, it is advised that all yachts follow the marked channels.



12. THE START

- 12.1. Races will be started using RRS26 with the warning signal made 5 minutes before the starting signal.
- 12.2. The starting line for each race is as described Appendix A.
- 12.3. A boat that does not start within 10 minutes after her starting signal will be scored 'Did not Start' without a hearing. This changes RRS A5.1 and A5.2.
- 12.4. The start will also be transmitted over the VHF radio.
- 12.5. The race officer will transmit other information on Ch 72 approximately 30 mins prior to the start. Yachts are advised to keep a listening watch on leaving port.
- 12.6. The committee vessel will be La Fleche or substitute committee yacht.
- 12.7. The start line for each race is defined in Appendix A. However, if conditions dictate the RO may announce a start will be partway along the passage and the line will be between the Committee Vessel and another buoy or yacht. Any such change will be communicated over VHF and the committee vessel will display flag "L".

13. CHANGE OF THE NEXT LEG OF THE COURSE

- 13.1. To change the next leg of the course the race committee will communicate by VHF only. This changes RRS 33.

14. THE FINISH

- 14.1. The Finish line for each race is as described Appendix A.
- 14.2. Self-Timing and Declarations:
 - a) All finishes are by self-timed declarations in BST. All times shall be in GPS (BST) time, accurate to Hours, Minutes and Seconds as the bow is judged to cross the finish line. Any watch used shall be properly synchronised with GPS time.
 - b) All yachts finishing shall communicate their finishing time to New Moon 2 (or other delegated yacht) via the Event's WhatsApp Group or by radio after finishing.
 - c) Any yachts retiring shall notify the race committee in accordance with section 19.3 below.

15. PENALTIES AND EXONERATION

- 15.1. The Scoring Penalty, RRS 44.3 does not apply. Except at the starts where one end of the line is La Fleche (or substitute committee vessel, which is competing). If a vessel is over the line, the Race officer in these circumstances will decree a number of turns as it will not be practical to go back to the start line as it will have disappeared. However, in some circumstances the Race officer may require the over the line vessel to round the other end of start line mark if this is practical. This will all be announced on the radio by the race officer. This changes RRS 30 and RRS 44.
- 15.2. Any vessel entering an obstruction shall be liable to a 20% time penalty. This changes RRS 28.2 and RRS 44.



16. TIME LIMITS

- 16.1. Time limits for each race are stated in the course descriptions in Appendix A.
- 16.2. The time limit for a race is extended by 1hr if the first boat finishes inside the time limit.

17. HEARING REQUESTS

- 17.1. Notices of hearings will be posted on the event's WhatsApp group, including the date/time of the hearing and the place and/or method of hearing.
- 17.2. Hearings may be held in person or by Web Conference, email or a combination of any of these
- 17.3. Results of hearings will be posted on the event WhatsApp group
- 17.4. Appendix T (Arbitration) applies
- 17.5. Notice of Race 23 (Insurance) or rules in the Sailing Instructions or Notice of Race marked [NP] shall not be grounds for a protest by a boat. This changes RRS 60.1(a).

18. SCORING:

- 18.1. See NoR 15.
- 18.2. The Return Channel race is stand alone and does not form part of the series.

19. SAFETY REGULATIONS

- 19.1. [DP] All boats are required to check in with the Race Committee before the warning signal on the first race of each day by passing the starboard side of the race committee boat.
- 19.2. All boats shall keep their AIS systems on and transmitting whilst at sea.
- 19.3. [DP] A boat that retires from a race shall notify the race committee as soon as possible by either, radioing Kelvin Hull on board Yacht La Fleche or Tim Whitehead onboard Yacht New Moon 2, on VHF ch 72, or via mobile (phone or text) +44 7739505395. If it is not possible to contact either of the above, then information should be passed to another yacht to relay retirement.
- 19.4. Any boat other than the committee's named in section 19.3 above that receives a retirement notification from another yacht shall relay that message in accordance with section 19.3 above
- 19.5. Breakdowns, troubles, injuries:
 - a) While it is hoped there are no problems, if a yacht does have a difficulty, then early communication with the committee vessel or closer vessel is important. Other yachts should go to the assistance of any vessel calling for help.
 - b) If a yacht does stop to give assistance, if possible, take note of the time and location when she ceases to race and similarly when she restarts the race so that fair redress can be considered.

20. REPLACEMENT OF CREW OR EQUIPMENT

- 20.1. Substitution of crew is not allowed without the approval of the Race Committee

21. EQUIPMENT AND MEASUREMENT CHECKS

- 21.1. A boat may be inspected at any time for compliance with class rules, notice of race or sailing instructions.

22. SUPPLIED BOATS

Does not apply.



23. OFFICIAL VESSELS

Does not apply.

24. SUPPORT TEAMS

Does not apply.

25. [DP][NP]TRASH DISPOSAL

All vessels shall be responsible for the disposal of their own trash.

26. BERTHING

26.1. Berthing shall be in accordance with instructions issued by the OA and ports visited.

27. HAUL-OUT INSTRUCTIONS

27.1. Boats shall not be hauled out during the event except with and according to the terms of prior written permission of the race committee.

28. DIVING EQUIPMENT AND PLASTIC POOLS

28.1. Underwater breathing apparatus and plastic pools or their equivalent shall not be used around keelboats between the warning signal of the first race and the end of the last race of the event.

29. PRIZES

See NoR 24

30. RISK STATEMENT

See NoR 22

31. INSURANCE

See NoR 23



Appendix A – Courses & Race Details

Race 1 - Channel Race to St Peter Port

Distance: Approximately 80 miles

Friday 19 June 2026

Intended Start Time: 08:00 hrs BST

Tides

- HW Dover 15:07 BST
- HW Dartmouth 10:21 BST
- HW Torquay 10:23 BST
- HW St Peter Port 22:53 BST

Warning signal (Numeral Pennant 1)

- 07:55 BST

The Start

The Starting Line will be between the mast on the committee vessel displaying an **Orange** flag and the adjacent RTYC race mark.

Or

If an Orange Flag is displayed from the RTYC Flagpole at the base of Haldon Pier 30 minutes before the warning signal, the start will be from Haldon Pier. Then the starting line will be between the pole at Haldon Pier displaying an **Orange** flag and outer distance Mark R or G, as broadcast on VHF Channel 72.

The Course

From the Starting Line, leaving to Port, the SW corner of the TSS (49° 46'.30N 002° 50'.30W), then to the Finishing Line. Yachts may choose to go to the North or South of Guernsey and must either pass to the NE of Platte Fougere light or to the SW of Les Hanois lighthouse and must cross the finishing line in the appropriate direction they have travelled.

Shorten Course

In case of a shortened course the finish line will be the transit when Channel Light buoy (49° 54.45'N 02° 53.74'W) bears 60° and yachts must pass within 200 metres leaving it to port

The Finish

The Finishing Line will be a transit of the lighthouse at the entrance of the Victoria Marina (49° 27.32N 02° 32.03'W) with the northern side of the Castle Breakwater below the Breakwater lighthouse. This Victoria Marina light should bear 275° magnetic (if in poor visibility then the Victoria Breakwater lighthouse should bear 270° magnetic). Yachts must cross this line within 400 metres of the lighthouse.

Time Limit

The Time Limit shall be 23:00 hours BST Friday 19th June 2026.

Self-Timing Declarations

Finish times shall be submitted as detailed in section 14.2 above as soon after finishing as possible.

Retirement

Any Yacht retiring from the race must inform the race organiser on board La Fleche or one of the competing yachts by VHF Channel 72 or to any other yacht in the race to relay to the race organiser or RTYC 01803-292006.



Royal Torbay Yacht Club



Trophies

The following trophies to be awarded at the annual RTYC club Prize giving:

- IRC
- RYA YTC

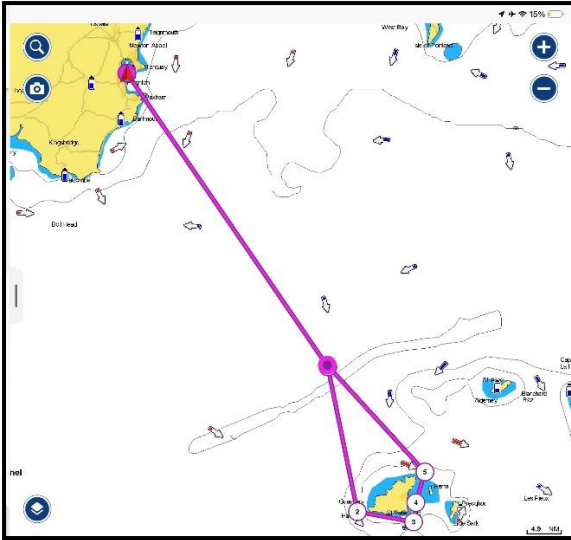


Figure 1 Torquay to St Peter Port. *Not for Navigation*



Race 2 - St. Peter Port to St Cast le Guildo

Distance: Approximate 50Nm

Sunday 21 June 2026

Intended Start Time: 08:00 BST

Tides

- HW Dover 16:49 BST
- HW St Peter Port 12:16 BST
- HW St Cast 11:47 BST / Midnight

Warning signal (Numeral Pennant 1)

- 07:55 BST

Start Line

Guernsey Yacht Club line with outer distance mark as committee vessel. (GYC line is south of harbour entrance identified by a Day-Glo mark high up on the wall of the castle fortifications and an orange buoy approximately 100m offshore) Starting from North to South.

Course

From the starting line leave NW Minquiers (48° 59.6 N 2°20.6 W) to port. Then to SW Minquiers (48° 54.3 N 2°19.4 W). Then to the finish line.

Yachts shall pass be within 100m of SW Minquiers cardinal mark, leaving to it port (and take their time when SW Cardinal Mark bears 090° (to facilitate, if necessary to calculating finishing on a shortened course basis).

Finish Line

The finishing line will be when the East Cardinal Mark Les Bourdinots (48° 39.04 N 2° 13.38 W) bears 250°. Yachts must pass within 100 metres leaving it to Starboard.

Time Limit

The Time Limit shall be 20:00 hours BST Sunday 21 June 2026.

Self-Timing and Declarations

Finish times shall be submitted as detailed in section 14.2 above as soon after finishing as possible.



Figure 2: St Peter Port to St Cast le Guildo **Not for Navigation**



Race 3 – St Cast le Guildo to Dahouet

Distance: Approximately 18 miles

Tuesday 23 June 2026

Intended Start Time: 08:00 BST

Tides

- HW Dover 06:31 / 18:46 BST
- HW Dahouet 13:34 BST

Warning signal (Numeral Pennant 1)

- 07:55 BST

Start Line

Between Committee Vessel and Bourdinots East Cardinal Mark (48° 39.04 N 02° 13.38 W).

Course

From the start line leave L'Evette North Cardinal mark (48 35.5'N 02 31.46W) to port and then leave Petit Bignon West Cardinal mark (48 36.82 N 02 35.04W) to port then to the finishing line.

Finish Line

The finish line will be when the Le Dahouet North Cardinal Mark (48° 35.2 N 02°35.4 W) bears 90°. Yachts should note the numerous rocks, Cardinal Marks and shallows along the passage from St Cast to Dahouet.

Time Limit

The Time Limit shall be 12:45 hours BST Tuesday 23 June 2026.

Note: HW Dahouet is approximately at 13:30. The marina cill is open from 12:00 to 15:00 BST.

Self-Timing and Declarations

Finish times shall be submitted as detailed in section 14.2 above as soon after finishing as possible.

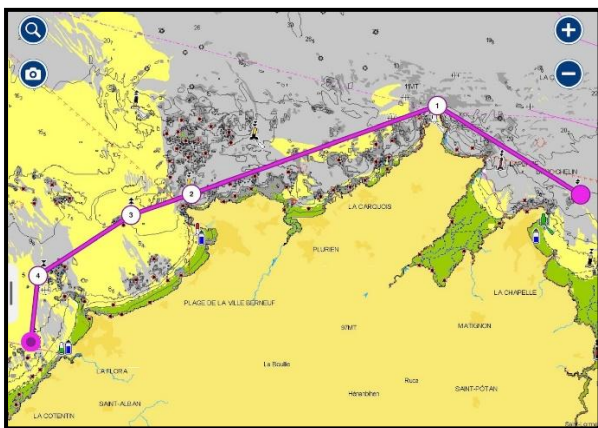


Figure 3: St Cast le Guildo to Dahouet *Not for Navigation*



Race 4 – Dahouet to St Quay Portrieux

Distance: Approximately 10 miles

Wednesday 24 June 2026

Intended Start Time: 15:00 BST

Tides

- HW Dover 07:36 / 19:53 BST
- HW Dahouet 14:40 BST

Warning signal (Numeral Pennant 1)

- 14:55 BST

Start Line

Between the committee vessel and Le Dahouet N Cardinal Mark (48° 35.2 N 02° 35.4 W)

Course

From the start line leave Caffé East Cardinal mark (48 37.85N 02 46.17W) to port and then leave La Roseliere South Cardinal mark (48 37.29N 02 46.17W) to starboard then to the finishing line.

Finish Line

The finish line will be the transit when Les Noirs West Cardinal Mark (48° 39.10 N 02°48.42 W) bears 90°. Yachts must pass within 50 metres leaving the Cardinal Mark to Starboard.

Time Limit

The Time Limit shall be 18:00 hours BST Wednesday 24 June 2026.

Self-Timing and Declarations

Finish times shall be submitted as detailed in section 14.2 above as soon after finishing as possible.

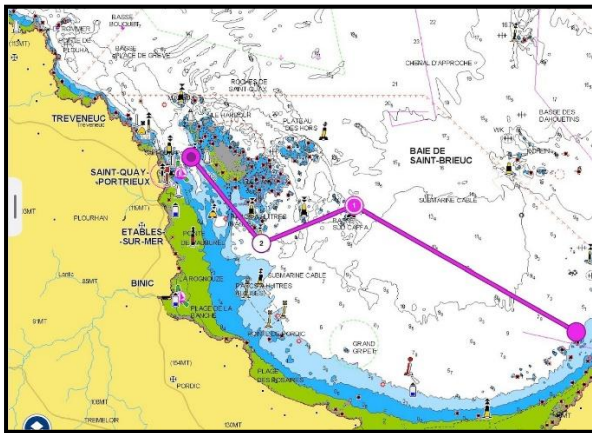


Figure 4: Dahouet to St Quay Portrieux *Not for Navigation*



Race 5 – St Quay Portrieux to St Helier

Distance: 42 miles

Thursday 25 June 2026

Intended Start time 08:00 BST

Tides

- HW Dover 08:39 / 20:59 BST
- HW St Malo 03:06 / 15:46 BST
- HW St Quay 02:56 / 15:36 BST
- HW ST Helier 03:22 / 16:00 BST

Warning signal (Numeral Pennant 1)

- 07:55 BST

Start Line

Between the committee vessel and Les Madeaux (48° 40.40 N 02°48.81 W)

Course

From the start line leave recording buoy (48 54.54N 02 36.97W) to starboard then leave NW Minquiers to Port (48° 59.6 N 02°20.6 W). Yachts to be within 50m of the North Cardinal Mark and take time when the mark bears 300° then to Passage Rock (49° 9.5 N 02°12.30 W) leaving the North Cardinal Mark to Starboard then to finish.

Finish Line

The Finishing line will be when Ruadiere (49° 9.76 N 02°8.66 W) the Starboard hand lateral mark bears 180 °. Yachts must pass within 50m of the mark.

All yachts shall record their time, as detailed in section 14.2.

Time Limit

The Time Limit shall be 18:00 hours BST Thursday 25 June 2026.

Self-Timing and Declarations

Finish times shall be submitted as detailed in section 14.2 above as soon after finishing as possible.

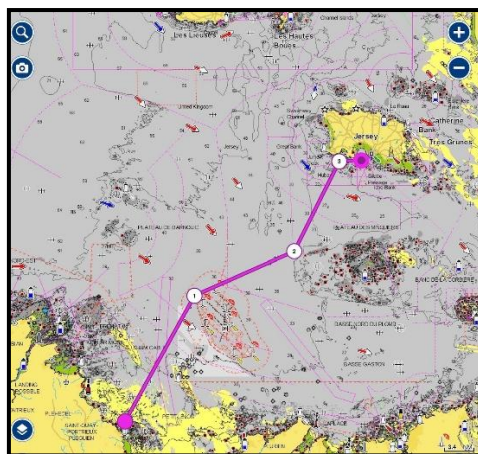


Figure 5: St Quay Portrieux to St Helier *Not for Navigation*



Race 6 – St Helier to St Peter Port

Distance: 25 miles

Saturday 27 June 2026

Intended Start time 07:30 BST

Tides

- HW Dover 10:25 / 22:48 BST
- HW St Helier 05:21 BST
- HW St Peter Port 05:27 / 17:51

Warning signal (Numeral Pennant 1)

- 07:25 hours

Start Line

The start line will be between the committee vessel and Diamond Port Hand Lateral Buoy (49° 10.13 N 02°8.67 W)

Course

From the start line to the finish line.

Finish Line

The finish line will be the transit when Lower Heads South Cardinal Buoy (49° 25.85 N 02°28.55 W) bears 045° and yachts must pass within 100m leaving it to Starboard.

All yachts shall record their time, as detailed in section 14.2.

Time Limit

The Time Limit shall be 14:00 hours BST Saturday 27 June 2026.

Self-Timing and Declarations

Finish times shall be submitted as detailed in section 14.2 above as soon after finishing as possible.

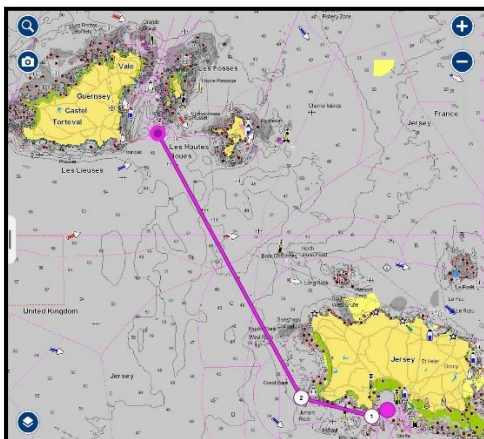


Figure 6: St Helier to St Peter Port *Not for Navigation*



Race 7 - Return Channel Race St Peter Port to Channel Light Buoy

Distance: Approximately 33 miles

Sunday 28 June 2026

Intended Start time 08:00 BST

Tides

- HW Dover 11:10 / 23:32 BST
- HW St Peter Port 06:14 / 18:34 BST
- HW Torquay 18:18 BST

Warning signal (Numeral Pennant 1)

- 07:55 hours

Start Line

The start line will be between the committee vessel and Reffee South Cardinal Mark. (49° 27.74N 2° 31.24W)

Course

From the start line leaving Platte Fougere to Port passing within 200 meters the SW corner of the TSS (49° 46'.30N 02° 50'.30W) taking your time when it bears 070° then to the finish line.

Finish Line

The finish line will be the transit when Channel Light buoy (49° 54.45'N 02° 53.74'W) bears 90° and yachts must pass within 200 metres leaving it to starboard.

Reminder: All boats racing are required to comply with rule 10 of the IRPCAS, Traffic Separation Schemes (TSS), boats that break this rule may be penalised if protested and unable to evidence their Track.

Time Limit

The Time Limit shall be 16:00 hours BST Sunday 28 June 2026.

Self-Timing and Declarations

Finish times shall be submitted as detailed in section 14.2 above as soon after finishing as possible.

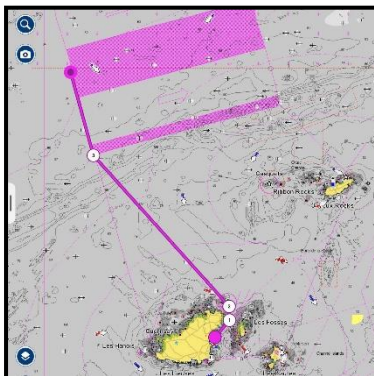


Figure 7: St Peter Port to Channel Light Buoy
Not for Navigation