

Royal Torbay Yacht Club – Club Racing Programme 2026



SAILING INSTRUCTIONS

The Organising Authority (OA) is the Royal Torbay Yacht Club (RTYC)

These Sailing Instructions (SI's) cover the RTYC Club Racing Programme 2026 except the Channel Race, Offshore Week, Torbay Royal Regatta and Torbay Dinghy Regatta for which separate Sailing Instructions will be published.

The notation [DP] in a rule in the NoR or SI'S means that the penalty for a breach of that rule may, at the discretion of the protest committee, be less than disqualification.

The notation [NP] in a rule means that a boat may not protest another boat for breaking that rule. This changes RRS 60.1.

1. RULES

- 1.1. See Notice of Race (NoR) Section 1 covering the RTYC Club Racing Programme 2026.

2. CHANGES TO SAILING INSTRUCTIONS

- 2.1. Any changes to Sailing Instructions will be posted at least 24 hours before the first race affected by the change. Flag "L" will be displayed ashore before the warning signal of the first race for each class to which the change in Sailing Instructions applies.
- 2.2. Supplementary Sailing Instructions, when applicable, will be displayed on the Official Notice Board 7 days before the start of each race.

3. COMMUNICATION WITH COMPETITORS

- 3.1. See Section 3 of the Notice of Race (NoR) for the RTYC Club Racing Programme 2026.
- 3.2. Additionally:
 - 3.2.1. On the water the Race Committee (RC) intends to monitor and communicate with competitors in IRC, Cruiser and Sportsboat classes on VHF radio channel 72. The communications may include location of committee vessel, course instructions, sail numbers of recalled yachts (OCS), course changes and safety matters.
 - 3.2.2. Boats called by the RC, by name or sail number may respond. This changes RRS 41.
 - 3.2.3. Failure to broadcast by the RC or time it accurately, or failure to receive such broadcast will not be grounds for redress. This changes RRS 61.4 (b).

4. CODE OF CONDUCT

- 4.1. (DP) Competitors and support persons shall comply with reasonable requests from race officials.
- 4.2. Reasonable actions by event officials to implement government guidance, protocols or legislation, even if they later prove to have been unnecessary, are not improper actions or omissions.

5. SIGNALS MADE ASHORE

- 5.1. Signals made ashore will be displayed from the flagpole at the base of Haldon Pier.
- 5.2. When flag AP is displayed ashore, '1 minute' is replaced with 'not less than 30 minutes' in Race Signals AP. This does not apply when SI 12.2 below is in operation.

Royal Torbay Yacht Club – Club Racing Programme 2026

6. SCHEDULE OF RACES

6.1. Races are scheduled in the Club Racing Programme 2026 available at [Club Racing 2026 | Royal Torbay Yacht Club \(rtyc.org\)](https://www.rtyc.org).

6.2. Times of first warning signals:

Day and Class	Warning Signal for first Start	
Sunday		
IRC and Cruiser Classes	0955	
Sportsboats Handicap & SB 20 Classes	1000	
PY Dinghy Handicap & Junior Classes	1000	
Wednesday	April - August	September only
IRC and Cruiser Classes	1810	1755
Sportsboats Handicap & SB 20 Classes	1815	1800
PY Dinghy Handicap Class	1815	1800
Junior Handicap Classes	1820	1805
New Year's Day Race		
Cruiser Class	1055	
All other classes	1100	
Coastal Series	See SI 6.4 below	
Bills Goblet	See SI 6.5 below	



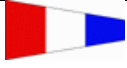

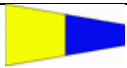


6.3. When two or more races are sailed the warning signal for the next race will be displayed as soon as possible after the finish of the previous race.

6.4. Warning signals for Coastal Races will be detailed in Supplementary Sailing Instructions for The Smugglers Run, Torquay-Salcombe/Salcombe-Torquay and Torquay-Yealm/Yealm-Torquay Races and in Sailing Instructions published by the organising clubs for other coastal races.

6.5. Warning signals for Bill's Goblet will be detailed in the Supplementary Sailing for the race.

7. CLASS FLAGS

7.1. Flag Designations:

IRC Class	Numeral Pennant 1	
Cruiser Class	Numeral Pennant 2	
Sportsboat Handicap & SB 20 Classes	Numeral Pennant 3	
PY Dinghy handicap Class	Numeral Pennant 4	
Junior Handicap Class (Fast)	Numeral Pennant 5	
Junior Handicap Class (Sports)	Numeral Pennant 6	
Coastal Series	Numeral Pennant 7	

7.2. Boats racing in IRC, Cruiser and Coastal classes/series shall display the relevant class flag whilst racing.

Royal Torbay Yacht Club – Club Racing Programme 2026

8. RACE AREA

- 8.1. The club racing area will normally be in Tor Bay as shown in Addendum 1 Course Card 2026. Coastal Races will be held in the coastal waters of South Devon.

9. COURSES

- 9.1. The course marks names/designations, will be displayed on a board on the committee boat in the order in which they are to be rounded or passed.
- 9.2. IRC, Cruiser, Coastal and Sportsboat Classes: These courses may be broadcast on VHF Channel 72.
- 9.3. A Red flag displayed on the committee boat or Haldon Pier will signify that all marks are to be left to PORT. A Green flag will signify that all marks are to be left to STARBOARD. If neither Red nor Green flags are displayed the marks are to be left as will be shown on a course board with a (P) or (S) to signify that they are to be left to Port or Starboard.
- 9.4. The number of laps to be sailed will be displayed on a board on the committee boat. The course may be shortened for any reason at the discretion of the Race Committee.
- 9.5. Course instructions for starts from Haldon Pier will be broadcast on VHF Channel 72.
- 9.6. PY Dinghy and Junior handicap classes may receive verbal instructions from an attendant safety boat. This changes SI 9.2.

10. MARKS

- 10.1. Location, name/designation and description of marks can be found in Addendum 1 and Addendum 2.

11. OBSTRUCTIONS

- 11.1. The entirety of the Scallop Nursery (SN) beds, forming an imaginary box including the yellow beds marker buoys (flashing Y.2.5s) approximately 0.5nm south of Thatcher Rock, are an obstruction. This obstruction can be passed on any side. The coordinates that make up the corners of the bed are:
- | | |
|---------------------------|----------------------------|
| 50°26.700'N. 03°29.690'W. | 50°26.865'N. 003°29.690'W. |
| 50°26.865'N. 03°29.170'W | 50°26.700'N. 003°29.170'W. |
- 11.2. The entirety of the Kelp Farm (KF) beds, forming an imaginary box including the beds marker buoys approximately 0.5nm west of Thatcher Rock, are an obstruction. This obstruction can be passed on any side. The coordinates that make up the corners of the bed are:
- | | |
|---------------------------|-----------------------------|
| 50°27.109'N. 03°29.972'W. | 50°27.001'N. 03°29.548'W. |
| 50°27.109'N. 03°29.548'W | 50°27.001'N. 003°29. 972'W. |
- 11.3. A yellow buoy with associated trailing buoys serving as a wave monitor located at approximately:
- 50°26.02'N. 003°31.08'W.
- 11.4. The Emsstrom Wreck (Em): The obstruction is the area bound by its North (QF) and South cardinal marks (Q(6)+LFI. 15secs) at approximately:
- 50° 28.10'N. 003° 24.86'W.
- This obstruction can be passed on any side.

Royal Torbay Yacht Club – Club Racing Programme 2026

12. THE START

- 12.1. Races shall be started by using RRS 26 and the warning signal for each succeeding start shall be made with the starting signal of the preceding class.
- 12.2. If an Orange Flag is displayed from the RTYC Flagpole at the base of Haldon Pier 30 minutes before first warning signal of the day, the start will be from Haldon Pier. The starting line will be between the pole at Haldon Pier displaying an Orange flag and outer distance Mark R or G, as broadcast on VHF Channel 72.
- 12.3. When the committee boat is afloat, the Starting Line will be between the mast on the committee boat displaying an Orange flag and a nearby mark or a white danbuoy with an Orange flag (Mark P).
- 12.4. The committee boat may be positioned at either end of the starting line at the discretion of the Race Committee.
- 12.5. [DP] Boats whose signal has not been made shall avoid the starting area during the starting sequence for other races.
- 12.6. A boat that does not start within 4 minutes of her starting signal will be scored Did Not Start without a hearing. This changes A5.1 and A5.2

13. CHANGE OF THE NEXT LEG OF THE COURSE

- 13.1. To change the next leg of the course, the Race Committee will signal a change of course by displaying Flag C with the class flag(s) for the classes affected by the change, accompanied by repetitive sound signals. If no class flag is displayed the change of course will apply to all classes. The new course to be sailed will be displayed on the board on the committee boat indicating the marks to be rounded and the order and whether they are to be left to port or starboard. No compass bearing of the next leg, red/green indicator or +/- will be displayed. This changes RRS 33. The change of course may also be broadcast on VHF Channel 72.

14. THE FINISH

- 14.1. The finishing line will be between the mast on the committee boat displaying a Blue flag and a mark of the course or between a pole on Haldon Pier displaying a Blue flag and an outer distance Mark R or G as broadcast on VHF Channel 72.
- 14.2. If the Race Committee boat is absent when a boat finishes, she shall report her finishing time, and her position in relation to nearby boats, to the Race Committee by email to results@rtyc.org within 24 hours of the start of the race.
- 14.3. In races where boats are asked to self-time their finish, they should follow the procedure in SI 14.2 above.

15. PENALTY SYSTEM

- 15.1. Will be in accordance with paragraph 14 “Penalty System” of the NoR.

16. TARGET TIMES AND TIME LIMITS

- 16.1. There are no time limits unless included in Supplementary Sailing Instructions.
- 16.2. Target Times for IRC and Cruiser - Wednesday Series 75 minutes, Sunday Series 150 minutes.
- 16.3. Target Time for Sportsboats, PY Dinghy and Juniors Classes – Wednesday series 60 minutes for each race and 45 minutes for each race on Sunday, where two or more races are scheduled.
- 16.4. When two or more races are scheduled, boats failing to finish the preceding race within 20 minutes after the first boat in her class sails the course and finishes will be scored Did Not Finish without a hearing. This changes RRS 61.4(b).
- 16.5. Failure to meet the target time will not be grounds for redress. This changes RRS 61.4(b).

Royal Torbay Yacht Club – Club Racing Programme 2026

17. HEARING REQUESTS

- 17.1. The protest time limit is 24hrs after the start of the race to which the protest applies.
- 17.2. Hearing request forms are available from the club or the club website.
- 17.3. Completed forms shall be delivered to the Race Officer, the RTYC club office or by email to sailing@rtyc.org
- 17.4. Notices will be posted, no later than 48hrs after the protest time limit to inform competitors of hearings in which they are parties or named as witnesses.
- 17.5. Hearings will be held at the RTYC or by electronic means, at the date and time advised.
- 17.6. RRS 61.2(b(2)) does not apply.

18. SCORING

- 18.1. Scoring will be in accordance with paragraph 15 of the NoR.

19. SAFETY REGULATIONS

- 19.1. [DP] Any boat that retires from a race shall notify the race committee at the first reasonable opportunity.
- 19.2. No PY Dinghy intending to race in the Winter Series shall leave the harbour unless a safety boat is underway.
- 19.3. No Junior Dinghies intending to race in any series shall launch and leave the harbour until released by the Beachmaster and a safety boat is underway.
- 19.4. See also NoR 25 Safety.

20. REPLACEMENT CREW OR EQUIPMENT

- 20.1. See NoR 4.7

21. EQUIPMENT AND MEASUREMENT CHECKS

- 21.1. [DP] When instructed by a Race Official on the water, a boat shall proceed to a designated area for inspection.

22. SUPPLIED BOATS

Does not apply.

23. OFFICIAL VESSELS

Does not apply.

24. SUPPORT TEAMS

Does not apply.

25. TRASH DISPOSAL

- 25.1. Trash may be placed aboard official boats.

26. BERTHING

Does not apply.

27. HAUL-OUT RESTRICTIONS

Does not apply.

28. DIVING EQUIPMENT AND PLASTIC POOLS

Does not apply.

29. PRIZES

- 29.1. Trophies and/or prizes will be awarded in accordance with paragraph 24 of the NoR.

30. RISK STATEMENT

See NoR 22

31. INSURANCE

See NoR 23

FURTHER INFORMATION CONTACT

Royal Torbay Yacht Club,

12 Beacon Terrace,

Torquay, TQ1 2BH,

Tel 01803 292006

Email: sailing@rtyc.org

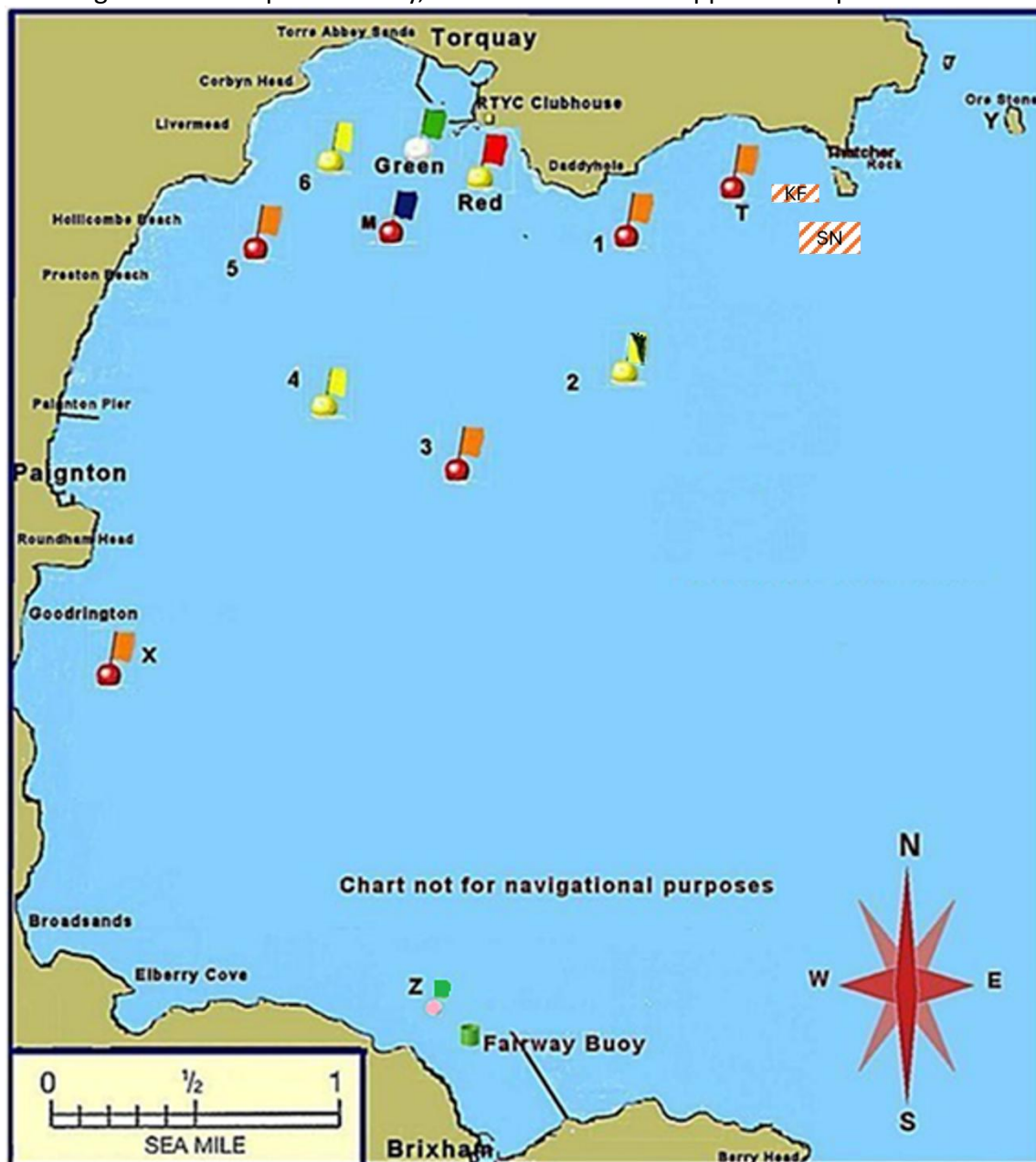
Club Website: [Club Racing 2026 | Royal Torbay Yacht Club \(rtyc.org\).](http://Club Racing 2026 | Royal Torbay Yacht Club (rtyc.org).)

Royal Torbay Yacht Club – Club Racing Programme 2026

ADDENDUM 1

COURSE CARD 2026

The Diagram below is pictorial only, see Addendum 2 for approximate positions.



Royal Torbay Yacht Club – Club Racing Programme 2026

ADDENDUM 2

Club Racing Marks Approximate Positions 2026

Name/ Designation	Latitude	Longitude	Description	Flag
Green (G)	50 27.29	003 31.72	White buoy	Green flag
Red (R)	50 27.25	003 31.43	Yellow buoy	Red flag
1	50 26.97	003 30.71	Red buoy	Orange flag
2	50 26.55	003 30.75	Yellow buoy	Yellow/Black flag
3	50 26.35	003 31.44	Red buoy	Orange flag
4	50 26.55	003 32.17	Yellow buoy	Yellow flag
5	50 26.86	003 32.44	Red buoy	Orange flag
6	50 27.16	003 32.21	Yellow buoy	Yellow flag
P	Laid Mark		White buoy	Orange flag
O	Laid Mark		Orange inflatable	
M	50 26.97	003 31.79	Red buoy	Blue flag
T	50 27.25	003 30.00	Red buoy	Orange flag
X	50 25.29	003 32.82	Red buoy	Orange flag
Y	50 27.40	003 28.17	Orestone Rock	
Z	50 24.34	003 31.05	BYC Yellow buoy	Green flag
Em (2 buoys)	50 28.10	003 24.86	North and South Cardinal Buoys marking Emsstrom Wk	

SCALLOP NURSERY (SN)

The coordinates that make up the corners of the bed are:

50°26.700'N. 03°29.690'W. 50°26.865'N. 003°29.690'W.

50°26.865'N. 03°29.170'W 50°26.700'N. 003°29.170'W

KELP FARM (KF)

The coordinates that make up the corners of the bed are:

50°27.109'N. 03°29.972'W. 50°27.001'N. 03°29.548'W.

50°27.109'N. 03°29.548'W 50°27.001'N. 003°29