

# **TORBAY DINGHY REGATTA 2024**

## **PY Dinghies and Junior Classes**

### **Incorporating the**

## **Albacore Class Southern Area Championships**

**Saturday 27<sup>th</sup> to Sunday 28<sup>th</sup> July 2024**

## **SAILING INSTRUCTIONS**

**The Organising Authority (OA) is the Royal Torbay Yacht Club (RTYC)**

The notation '[NP]' in a rule means that a boat may not protest another boat for breaking that rule. This changes RRS 60.1(a). The notation (DP) in a rule in the NOR means that the penalty for a breach of that rule may, at the discretion of the protest committee, be less than disqualification. [DP] – Rules for which the penalties are the discretion of the Protest committee.

### **1. RULES**

1.1 The event will be governed by:

- 1.1.1 the rules as defined in The Racing Rules of Sailing 2021-2024 including Royal Yachting Association (RYA) prescriptions.
- 1.1.2 RRS 40.1 shall apply at all times whilst afloat. This changes RRS 40.
- 1.1.3 (DP) Torbay Harbour Bye-Laws
- 1.1.4 See NoR 1 for other rules

### **2. CHANGES TO SAILING INSTRUCTIONS**

2.1. Any changes to these Sailing Instructions (SIs) will be posted on the Official Notice Board (ONB) before 09:00 on the day it will take effect, except that any change to the schedule of races will be posted on the ONB by 20:00 hours on the day before it will take effect.

### 3. COMMUNICATIONS WITH COMPETITORS

- 3.1. Notices to competitors will be posted on the ONB on the event website [TORBAY DINGHY REGATTA 2024](#)
- 3.2. (DP) While racing, except in an emergency, a boat shall not make voice or data transmissions and shall not receive voice or data communication that is not available to all boats. This restriction also applies to mobile telephones.
- 3.3. A competitor's WhatsApp group may be used, providing notifications, Race Committee (RC) communications whilst ashore, and protest notices. Failure to receive WhatsApp messages shall not be grounds for redress. This changes RRS 62.1(a).

### 4. CODE OF CONDUCT

- 4.1. (DP) Competitors and support persons shall comply with reasonable requests from race officials.

### 5. SIGNALS MADE ASHORE

- 5.1. Signals made ashore will be displayed on the official flagpole at the inshore end of Haldon Pier, adjacent to the slipway.
- 5.2. Boats shall not launch until Flag D is displayed on the official flagpole with one sound signal. The warning signal will be made not less than 45 minutes after Flag D is so displayed.
- 5.3. When AP is displayed on the official flagpole, 1 minute is replaced with not less than 45 minutes from race signal AP. This changes the meaning of AP in Race Signals.

### 6. SCHEDULE




- 6.1. Boats are required to register at the Race Office on the ground floor Royal Torbay Yacht Club between 15.00 and 17.00 on Friday 26<sup>th</sup> July and between 08.30 and 10.00 on Saturday 17<sup>th</sup> July.
- 6.2. Visiting boats shall check-in with the Beachmaster's team upon arrival at Haldon Pier.
- 6.3. There will be a competitors' briefing adjacent to the official flagpole on Haldon Pier at 09:30 on Saturday 27<sup>th</sup> July 2024.
- 6.4. Dates and Number of Races:

Date	No of Races	Class	Scheduled time of first Warning Signal
Saturday 27 <sup>th</sup> July 2024	Up to 4 races	PY Dinghies	11.10
		Albacores	11.15
		Junior Handicap	11.20
Sunday 28 <sup>th</sup> July 2024	Up to 4 races	PY Dinghies	09.55
		Albacores	10.00
		Junior Handicap	10.05

- 6.5. Six (6) races will be sailed over two days with up to four races on any day.
- 6.6. On Sunday 28<sup>th</sup> July 2024, no warning signal will be displayed after 15.00.

## 7. CLASS FLAGS

7.1. The class flag for each class will be as follows:

PY Dinghies	Numeral Pennant 4	
Albacore	Albacore Class Flag	
Junior Handicap	Numeral Pennant 5	

## 8. RACING AREA

8.1. Racing will take place in Torbay (See Appendix A)

## 9. THE COURSES

- 9.1. The course diagrams and configurations are shown in Appendix B.
- 9.2. The course to be sailed will be displayed on a board on the race committee boat.
- 9.3. If a course is shortened such that the finish is at the leeward end of the course, then the finish line will be that defined in paragraph 14 below. This changes RRS 32.2

## 10. MARKS

- 10.1. Rounding marks will be Orange inflatable buoys as described Appendix B.
- 10.2. For Junior Handicap classes the windward mark will be a Black inflatable buoy
- 10.3. The change of course mark will be a Yellow inflatable buoy.
- 10.4. The start mark will be a Race Committee vessel with a mast displaying an Orange flag or a White Danbuoy with an Orange flag. The finish mark will be a Race Committee vessel with a mast displaying a Blue flag or a White Danbuoy with a Blue flag.

## 11. OBSTRUCTIONS

- 11.1. The following is an obstruction - A yellow buoy with associated trailing buoys serving as a wave monitor located at approximately 050°433N 003°517W

## 12. THE START

- 12.1. The starting line will be between the mast on the Race Committee Vessel displaying an Orange flag at the Starboard end and the start mark at the Port end.
- 12.2. A boat that does not start within 4 minutes after her starting signal will be scored 'Did not Start' without a hearing. This changes RRS A4 and A5.

### **13. CHANGE OF THE NEXT LEG OF THE COURSE**

- 13.1. To change the next leg of the course, the race committee will lay a new mark (or move the finishing line) and remove the original mark as soon as practicable. When in a subsequent change, a new mark is replaced, it will be replaced by an original mark. If a windward mark with an offset mark is moved, the offset mark may not be replaced. This changes RRS 33.
- 13.2. Minor course changes (up to 150m) may not be signalled. This changes RRS 33.

### **14. THE FINISH**

- 14.1. The Finish line will be between a staff displaying a Blue flag on the Race Committee vessel and the finishing mark.
- 14.2. Boats failing to finish within 20 minutes after the first boat sails the course and finishes, may be scored according to their position on the course. This changes RRS 35, A4 and A5. Boats finished in this way will be advised by a race committee or safety boat using flag W with one sound signal and should stop racing and return to the start area.

### **15. PENALTIES AND EXONERATION**

- 15.1. For all classes RRS 44.1 is changed so that the Two-Turns Penalty is replaced by the One-Turn Penalty.
- 15.2. The Scoring Penalty, RRS 44.3 does not apply. This changes RRS 44.
- 15.3. The Post Race Penalty, the Advisory Hearing and RYA Arbitration of the RYA Rules Disputes procedures shall apply (for information of the procedures, go to [rya.org.uk/go/rules\\_disputes](http://rya.org.uk/go/rules_disputes)). The outcome of an RYA Arbitration can be referred to a protest committee, but an arbitration cannot be reopened or appealed. This changes RRS 63.1.

### **16. TIME LIMITS**

- 16.1. There are no race time limits.
- 16.2. The target time for the first boat of each class will be approximately 45 minutes. Failure to meet the target time will not be grounds for redress. This changes Rule 62.1(a).

### **17. HEARING REQUESTS**

- 17.1. See NoR 14.
- 17.2. The Protest Time Limit is 60 minutes after the last boat has finished the last race of the day or, the race committee signals no more racing today, whichever is the later. The time will be posted on the official notice board.
- 17.3. Hearing request forms are available from the race office or the event website, and upon completion shall be returned to the race office.
- 17.4. Notices will be posted no later than 30 minutes after the protest time limit to inform competitors of hearings in which they are parties or named as witnesses. Hearings will take place in a Protest Room located at the Royal Torbay Yacht Club, beginning at the time posted.

### **18. SCORING**

- 18.1. See NoR 15.

## **19. SAFETY REGULATIONS**

- 19.1. Check-out and check-in. The requirements of this instruction are for the safety of the competitors.
- a) The tally control point to check-out and check-in competitors will be located at the top of the slipway from Haldon Pier.
  - b) All helms and crews shall individually check-out before racing by personally advising Tally control of their sail number.
  - c) All helms and crews shall individually check-in immediately on returning to shore after racing, but no later than the protest time limit, by personally advising Tally control of their sail number.
  - d) The race committee may protest a boat for a breach of these safety regulations.
- 19.2. (DP) All boats are required to check in with the Race Committee before the warning signal on the first race of each day by passing the starboard side of the race committee boat.
- 19.3. (DP) A boat that retires from a race shall notify the race committee as soon as possible.
- 19.4. When returning to the harbour after racing, boats may be held outside the harbour entrance to avoid unnecessary congestion on the slipway. All boats are required to follow the instructions of the safety ribs supervising this process.

## **20. REPLACEMENT OF CREW OR EQUIPMENT**

- 20.1. Substitution or damaged or lost equipment will not be allowed without the written approval of the race committee. Requests shall be made at the first reasonable opportunity.

## **21. EQUIPMENT AND MEASUREMENT CHECKS**

- 21.1. See NOR 10

## **22. SUPPLIED BOATS**

- 22.1 Does not apply.

## **23. OFFICIAL VESSELS**

- 23.1. The Race Committee Boat (RTYC) is a 33ft Blue Motorboat with a white cabin.

## **24. SUPPORT TEAMS**

- 24.1. See NOR 16

## **25. TRASH DISPOSAL**

- 25.1. Trash may be placed aboard official vessels or brought back to shore and disposed of in the public facilities.

## **26. BERTHING**

- 26.1. See NoR 18

## **27. HAUL-OUT RESTRICTIONS**

- 27.1 Does not apply

## 28. DIVING EQUIPMENT AND PLASTIC POOLS

28.1 Does not apply

## 29. RISK STATEMENT

29.1. See NoR 22

## 30. INSURANCE

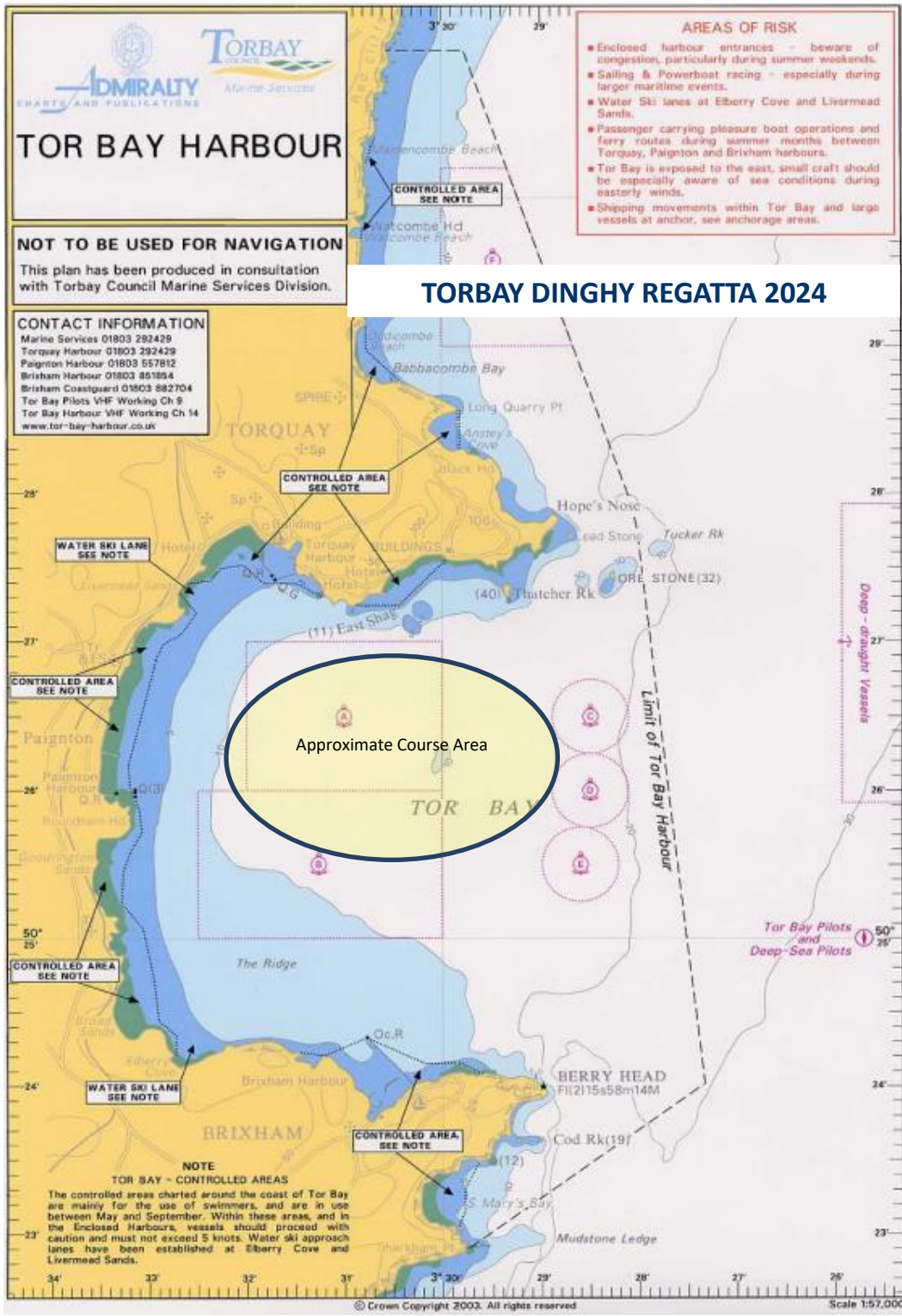
30.1 See NoR 23

## 31. PRIZES

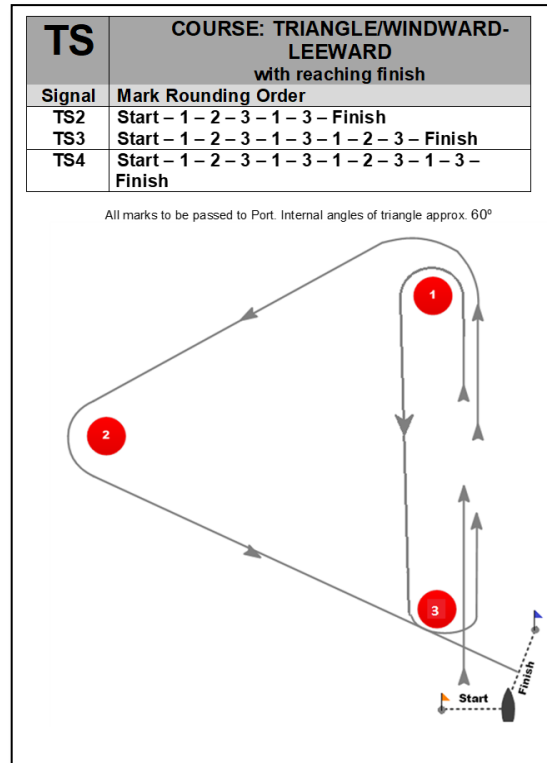
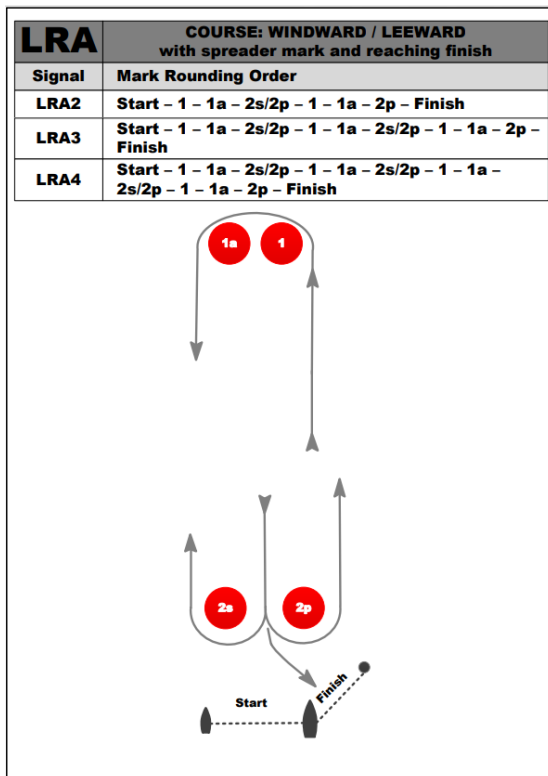
31.1. See NoR 24.



# APPENDIX A



## APPENDIX B



- Marks 1, 1a, 2, 2s, 2p and 3 are Orange inflatable buoys.
- For Junior Handicap classes the windward mark will be a Black inflatable buoy.
- On the LRA course where the 1a and/or 2s buoy is not in place the remaining mark shall be rounded to Port.

- **COURSE BOARD DESCRIPTIONS**

LRA2, LRA3 and LRA4 Windward/Leeward with gate and reaching finish

WL2, WL3 and WL4 denotes Windward/Leeward with **NO** gate and reaching finish (no course diagram provided)

TS2 Triangle/Windward leeward with reaching finish

TS3 Triangle/Windward leeward/Triangle with reaching finish

TS4 Triangle/Windward leeward /Triangle/ Windward leeward with reaching finish