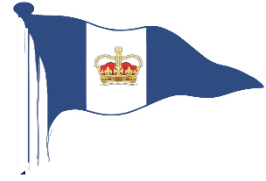




**INTERNATIONAL 14 CLASS  
CHAMPIONSHIPS &  
PRINCE OF WALES CUP (POW)  
12<sup>th</sup> to 16 June 2024**



**Organising Authority (OA)– Royal Torbay Yacht Club (RTYC)  
in conjunction with the UK International 14 Class Association**

**SAILING INSTRUCTIONS (SIs)**

*The notation '[NP]' in a rule of the Notice of Race or Sailing Instructions means that a boat may not protest another boat for breaking that rule. This changes RRS 60.1(a)*

*The notation '[DP]' in a rule of the Notice of Race or Sailing Instructions means that the penalty for a breach of that rule may, at the discretion of the protest committee, be less than disqualification.*

*The notation "14" in this document means current rules boats. "Old Boats" i.e. Classic/ Vintage and Penultimate boats are differentiated.*

*The notation "Old Boats" in this document means Vintage and Classic boats.*

*The notation "Penultimates" in this document means Penultimate boats.*

**1 RULES**

- 1.1 The event is governed by the rules as defined in *The Racing Rules of Sailing* as amended by NOR and stated below.
- 1.2 RRS 63.7 is changed as follows: A rule in the sailing instructions shall take precedence over a rule in the notice of race. This changes RRS 63.7.
- 1.3 RRS 40.1 Personal Flotation shall apply at all times while afloat.
- 1.4 RRS 62.1 is changed as follows: failure to achieve target time is not grounds for redress. This changes RRS 62.1.
- 1.5 (NP)(DP) Torbay Harbour Bye Laws apply at all times whilst afloat and on the harbourside.

**2 CHANGES TO SAILING INSTRUCTIONS**

- 2.1 Any change to the sailing instructions will be posted before 0900 on the day it will take effect, except that any change to the schedule of races will be posted by 2000 on the day before it will take effect.

**3 COMMUNICATIONS WITH COMPETITORS**

- 3.1 Notices to competitors will be posted on the official notice board located online at [I14 National Championships 2024](#) . Notices may also be displayed on the noticeboard on the ground floor of RTYC.
- 3.2 The race office is located in the office on the righthand side of the entrance hall RTYC. Telephone 01803 292006 and email [events@rtyc.org](mailto:events@rtyc.org)
- 3.3 [NP] [DP] While racing, except in an emergency, a boat shall not make voice or data transmissions and shall not receive voice or data communication that is not available to all boats.

**4 CODE OF CONDUCT**

- 4.1 [NP] [DP] Competitors and support persons shall comply with reasonable requests from race officials.
- 4.2 [NP] [DP] Competitors and support persons shall handle any equipment or place advertising provided by the organising authority with care, seamanship, in accordance with any instructions for its use and without interfering with its functionality.

## 5 SIGNALS MADE ASHORE

- 5.1 Signals made ashore will be displayed on the flagstaff on Haldon Pier.
- 5.2 When flag AP is displayed ashore with the Old Boat/Penultimate Class Flags, '1 minute' is replaced with 'not less than 45 minutes. This changes RRS Race Signals AP.
- 5.3 When flag AP is displayed ashore with the 14 Class Flag, '1 minute' is replaced with 'not less than 45 minutes. This changes RRS Race Signals AP.
- 5.4 [NP] [DP] Flag D with Old Boat/Penultimate Class Flags with one sound means 'The warning signal will not be made before the scheduled time or less than 45 minutes after flag D is displayed.' Boats shall not launch until this signal is made.
- 5.5 [NP] [DP] Flag D with the 14 Class Flag with one sound means 'The warning signal will not be made before the scheduled time or less than 45 minutes after flag D is displayed.'

## 6 SCHEDULE OF RACES

- 6.1 For Old Boats/Penultimates, a Competitors' Briefing will be held on Haldon Pier at 08.30 on Friday 14<sup>th</sup> June. There may also be a daily Briefing on other days which will be advised on the Official Notice Board.
- 6.2 For 14s, a Competitors' Briefing will be held on Haldon Pier at 11.00 on Thursday 13<sup>th</sup> June. There may also be a daily Briefing on other days which will be advised on the Official Notice Board.
- 6.3 Schedule of races

Date	1 <sup>st</sup> Warning signal not before	Fleet:	Event Number of races
Thursday 13 <sup>th</sup> June	13.00	Penultimates and Old Boats 14's	No racing 2 races
Friday 14 <sup>th</sup> June	09.55 13.00	Penultimates and Old Boats 14's	2 races 2 races
Saturday 15 <sup>th</sup> June	09.55 13.00	Penultimates and Old Boats 14's	POW 1 race POW 1 race
Sunday 16 <sup>th</sup> June	12.00	14's	2 races

- 6.4 To alert boats that a race or sequence of races will begin soon, the orange starting line flag will be displayed with one sound at least five minutes before a warning signal is made.
- 6.5 In the event of an adverse forecast the Organising Authority may advance the 14s programme. The POW Race for 14s can only be advanced by one day.
- 6.6 On the last scheduled day of racing no warning signal will be made after 1500 hrs.

## 7 CLASS FLAGS

- 7.1 The Old Boats Class flag is Flag K.
- 7.2 The Penultimates Class flag is Flag F.
- 7.3 The 14s Class flag is 14 Flag.

## 8 RACING AREA

- 8.1 Racing will take place in Tor Bay. SI Addendum 1 shows the location of the racing area.

## 9 COURSES

- 9.1 The diagrams in SI Addendum 2a and 2b, show the "windward-leeward" and "sausage-triangle" courses, including the approximate angles between legs, the order in which marks are to be rounded, the side on which each mark is to be left, the number of laps and what constitutes a lap.

- 9.2 No later than the warning signal for “windward-leeward” and “sausage-triangle” courses, the race committee signal vessel will display the approximate compass bearing and distance of the first leg, the course designation and if relevant, number of laps to be sailed.
- 9.3 The Prince of Wales Cup will be a “sausage-triangle” course.

## 10 MARKS

- 10.1 Rounding marks for all courses are orange inflatables.
- 10.2 The finish race committee vessel or mark is shown on the course diagrams in SI Addendum 2.
- 10.3 The change of course mark will be a Yellow inflatable.
- 10.4 The starting marks are race committee vessels or a white buoy with an Orange flag.
- 10.5 The finish marks are race committee vessels or a white buoy with a Blue flag.
- 10.6 If a gate mark is missing and has not been substituted in accordance with RRS 34, the remaining mark shall be left to port.

## 11 OBSTRUCTIONS

- 11.1 [NP] [DP] The following is an obstruction - A yellow buoy with associated trailing buoys serving as a wave monitor located at approximately 050°433N 003°517W.

## 12 THE START

- 12.1 Races will be started using RRS 26 with the warning signal made 5 minutes before the starting signal.
- 12.2 The starting line is between staffs displaying orange flags on the race committee vessels or a starting mark.
- 12.4 Boats whose warning signal has not been made shall avoid the starting area during the starting sequence for other races.
- 12.5 A boat that does not start within 10 minutes after her starting signal will be scored Did Not Start without a hearing. This changes RRS A5.1 and A5.2.

## 13 CHANGE OF THE NEXT LEG OF THE COURSE

- 13.1 To change the next leg of the course, the race committee will lay a new mark. When a new mark is laid, the original mark will be removed as soon as practicable. When in a subsequent change a new mark is replaced, it will be replaced by an original mark. This changes RRS 33.

## 14 THE FINISH

- 14.1 The finish line is between a staff displaying a blue flag on a race committee vessel and a finish race committee vessel displaying a blue flag or a finish mark as shown on the course diagrams at SI Addendum 2.

## 15 PENALTY SYSTEM

- 15.1 RRS 44.1 is changed so that the Two-Turns Penalty is replaced by One-Turn Penalty. Penalties while in the zone of the windward mark or on a spreader leg if set shall be delayed and taken at the first reasonable opportunity on the downwind leg. This change is added to RRS 44.2.

## 16 TIME LIMITS AND TARGET TIMES

- 16.1 For Old Boats and Penultimates the Race Target Time, Race Time Limit (see RRS 35), and the Finishing Window are shown in the table below.

Old Boat/Penultimate	Target Time	Race Time Limit	Finishing Window
<i>Two race day</i>	<i>45 mins</i>	<i>60 mins</i>	<i>15 mins</i>
<i>Old Boat POW/Long Race</i>	<i>90 mins</i>	<i>120 mins</i>	<i>30 mins</i>

- 16.2 For 14s the Race Target Time, Race Time Limit (see RRS 35), and the Finishing Window are shown in the table below. The Finishing Window is the time for boats to finish after the first boat sails the course and finishes.

14s	Target Time	Race Time Limit	Finishing Window
<i>Two race day</i>	<i>45 mins</i>	<i>70 mins</i>	<i>15 mins</i>
<i>One race day</i>	<i>90 mins</i>	<i>150 mins</i>	<i>45 mins</i>
<i>POW Cup Race</i>	<i>120 mins</i>	<i>240 mins</i>	<i>45 mins</i>

- 16.3 After the finishing window has expired and at the discretion of the race committee, a race committee vessel may motor through the fleet displaying flag W. It shall record boats still racing in order of increasing distance to sail the course to the finishing line. The leading boat so recorded will be scored one more than the last boat to finish before the recording began. Each subsequent boat recorded will be scored one more than the previous boat. This changes RRS 35, A4, A5.1, A5.2. This shall not be grounds for protest or redress by a boat (changes RRS 62.1)
- 16.4 Boats a lap behind at the finishing line: If a race of more than one lap is finished at a mark after one boat has finished, at the discretion of the race committee, a boat still racing in that race will be scored for the race when she next crosses the finishing line. Her score at the finishing line will be adjusted for the number of laps sailed. This changes RRS 35, A4, A5.1, A5.2. This shall not be grounds for protest or redress by a boat (changes RRS 62.1)
- 16.5 Failure to meet the Target Time will not be grounds for redress. This changes RRS 62.1(a).

## 17 HEARING REQUESTS

- 17.1 The protest time limit is 30 minutes after the last boat in that class comes ashore. The time will be posted on the official notice board.
- 17.2 Hearing request forms are available from the race office.
- 17.3 Notices will be posted no later than 30 minutes after the protest time limit to inform competitors of hearings in which they are parties or named as witnesses. Hearings will be held in the protest room, located on the ground floor of the RTYC, beginning at the time posted.

## 18 SCORING

- 18.1 The scoring system used will be RRS Appendix A5.2.
- 18.2 The scoring for Old Boats/Penultimates is as follows. The perpetual trophies for Old Boats and their designations are set out in NOR Addendum 3
- 18.2.1 Two races excluding Old Boat POW Race/Penultimate Long Race are required to be completed to constitute a series.
- 18.2.2 When fewer than 2 races have been completed, a boat's series score is the total of her race scores.
- 18.2.3 When 3 to 4 races have been completed, a boat's series score is the total of her race scores excluding her worst score.
- 18.3 The scoring for 14s is dictated by the perpetual trophies and designations listed in NOR Addendum 3.
- 18.3.1 Three races excluding POW Cup Race are required to be completed to constitute a series.

## 19 SAFETY REGULATIONS

- 19.1 [NP] [DP] A Tally system will be in place and all Competitors shall individually check out at the Tally Control Point at the top of the slip way, prior to launching and check in upon their return ashore. The penalty for a first tally infringement is £10 in the RNLI box, for the second and further infringements is £20 in the RNLI box.
- 19.2 [NP] [DP] On arrival in the racing area each day, a boat shall sail past the stern of the race committee starting vessel and hail her sail number.

- 19.3 [NP] [DP] Competitors will be given a label to fix to their trolley marked with her sail number.
- 19.4 Safety instructions from Race Committee: When the Race Committee considers that a boat, its equipment or crew are not adequate for the existing or anticipated conditions, or that a boat or crew member is in difficulty, it may instruct a boat or crew not to launch, or to retire or to sail ashore or to accept outside help. The boat and crew shall comply with such instructions without delay.
- 19.5 A boat that retires from a race shall notify a race committee vessel or support boat at the first reasonable opportunity.
- 19.6 If the crew are taken off a boat, the abandoned boat shall be marked by the support boat with red-white-striped hazard tape tied to the bow to signal the crew is safe.

## **20 REPLACEMENT OF CREW OR EQUIPMENT**

- 20.1 [NP] [DP] Substitution of competitors/14 crews is not allowed without prior written approval of the Organising Authority.
- 20.2 [NP] [DP] Substitution of 14 helms for the series shall not be permitted, however POW Cup Race as a standalone allows helm substitution with new helm data being registered with the Organising Authority before racing commences.
- 20.3 [NP] [DP] Substitution of equipment will be allowed as each race constitutes a trophy. All equipment that a competitor wishes to use during the week must be declared at equipment checks. Substitution of a hull will be permitted but the competitors will not be permitted to carry over their scores recorded with the previous hull, so that they will have two separate entries on the series scoresheets.
- 20.4 [NP] [DP] Substitution of damaged or lost equipment not declared at equipment checks will be allowed following approval by the race committee. Requests for substitution shall be made to the race committee at the first reasonable opportunity.

## **21 EQUIPMENT AND MEASUREMENT CHECKS**

- 21.1 A boat or equipment may be inspected at any time for compliance with the class rules, notice of race and sailing instructions.

## **22 IDENTIFICATION AND EVENT ADVERTISING**

- 22.1 [NP] [DP] In accordance with NoR 7.2, bibs will be provided by Organising Authority for competitors aboard the boats ranked first, second and third in the 14 series at the beginning of that day to wear on a voluntary basis. Bibs can be picked up every day from 0830 to 1000 hrs at the Race Office and shall be returned no later than protest time limit. Competitors should wear the bibs on top of any clothing or personal floatation device, visible while racing that day.

## **23 OFFICIAL VESSELS**

- 23.1 Official vessels will be identified as follows:

Race Committee vessels	Yellow Flag
Official Support vessels	White Numeral flag
Media vessel	White Media flag with letter P

## **24 [NP] [DP] SUPPORT TEAM VESSELS**

- 24.1 [NP] [DP] Support person vessels shall register at the Race Office and shall be marked with a flag supplied by the Organising Authority. If it is intended to bring a support boat please contact RTYC in advance to make suitable arrangements.
- 24.2 [NP] [DP] Support person vessels shall stay outside areas where boats are racing from the time of the first Warning Signal of a race until that race has been concluded.
- 24.3 [NP] [DP] All support person vessels shall carry a marine VHF radio and comply with RRS 37

'Search and Rescue Instructions'. The safety channel is VHF Ch 77 unless changed by the Race Officer.

## **25 TRASH DISPOSAL**

25.1 Trash may be placed aboard official race committee or support vessels.

## **26 PRIZES**

26.1 Prizes will be as per NoR 24 and NoR Addendum 3.

## **27 RISK STATEMENT**

Rule 3 of the Racing Rules of Sailing states: 'The responsibility for a boat's decision to participate in a race or to continue racing is hers alone.'

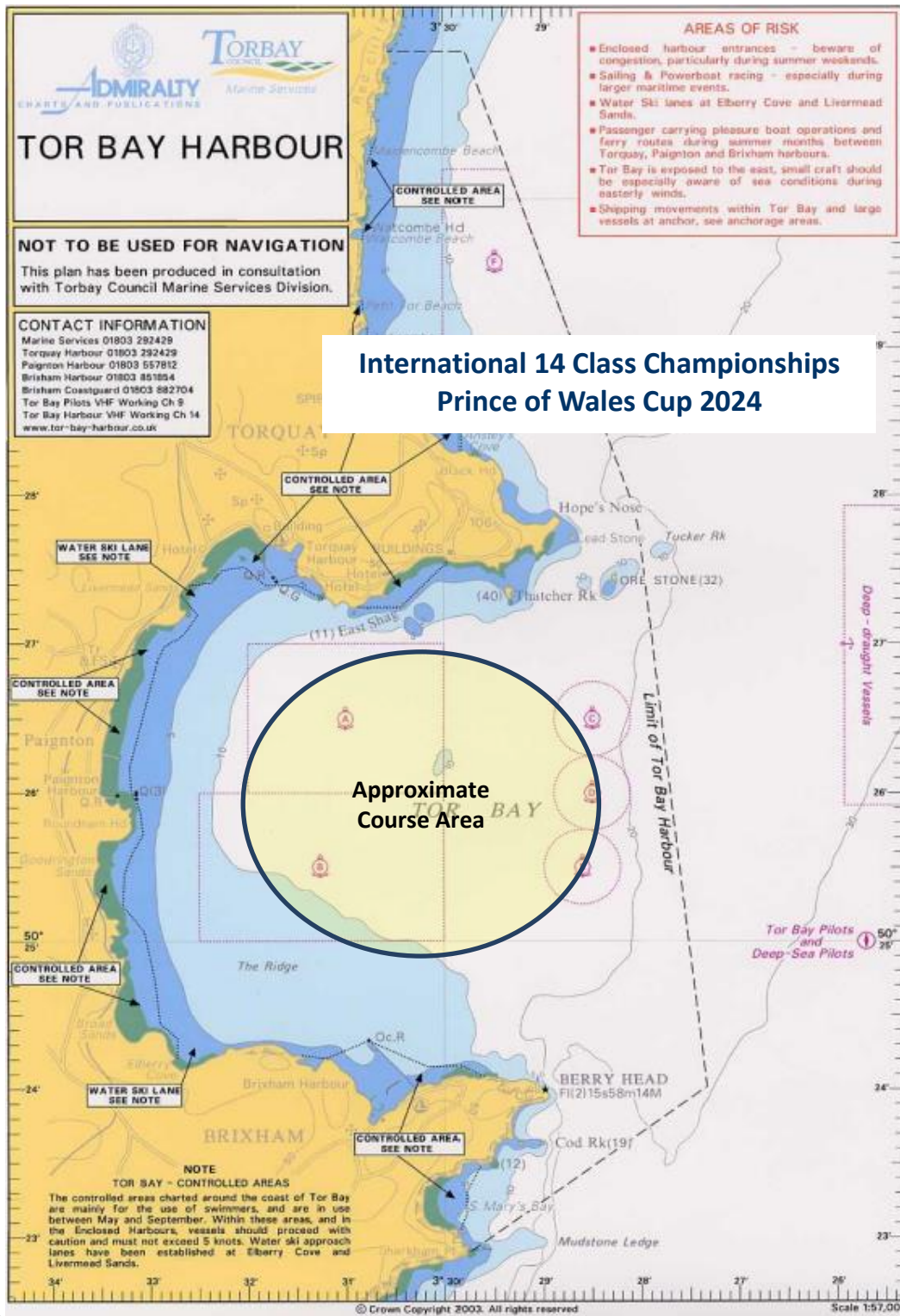
Sailing is by its nature an unpredictable sport and therefore inherently involves an element of risk. By taking part in the event, each competitor agrees and acknowledges that:

- (a) They are aware of the inherent element of risk involved in the sport and accept responsibility for the exposure of themselves, their crew and their boat to such inherent risk whilst taking part in the event.
- (b) They are responsible for the safety of themselves, their crew, their boat and their other property whether afloat or ashore;
- (c) They accept responsibility for any injury, damage or loss to the extent caused by their own actions or omissions;
- (d) Their boat is in good order, equipped to sail in the event and they are fit to participate;
- (e) The provision of a race management team, patrol boats and other officials and volunteers by the event organiser does not relieve them of their own responsibilities;
- (f) The provision of patrol boat cover is limited to such assistance, particularly in extreme weather conditions, as can be practically provided in the circumstances;
- (g) It is their responsibility to familiarise themselves with any risks specific to this venue or this event drawn to their attention in any rules and information produced for the venue or event and to attend any safety briefing held for the event.

## **28 INSURANCE**

28.1 Each participating boat shall be insured with valid third-party liability insurance with a minimum cover of £3,000,000 per incident or the equivalent.

# ADDENDUM 1



## ADDENDUM 2A

<b>LA</b>	<b>COURSE: WINDWARD / LEEWARD with spreader mark</b>
<b>Signal</b>	<b>Mark Rounding Order</b>
<b>LA2</b>	<b>Start - 1 - 1a - 2s/2p - 1 - 1a - Finish</b>
<b>LA3</b>	<b>Start - 1 - 1a - 2s/2p - 1 - 1a - 2s/2p - 1 - 1a - Finish</b>
<b>LA4</b>	<b>Start - 1 - 1a - 2s/2p - 1 - 1a - 2s/2p - 1 - 1a - 2s/2p - 1 - 1a - Finish</b>

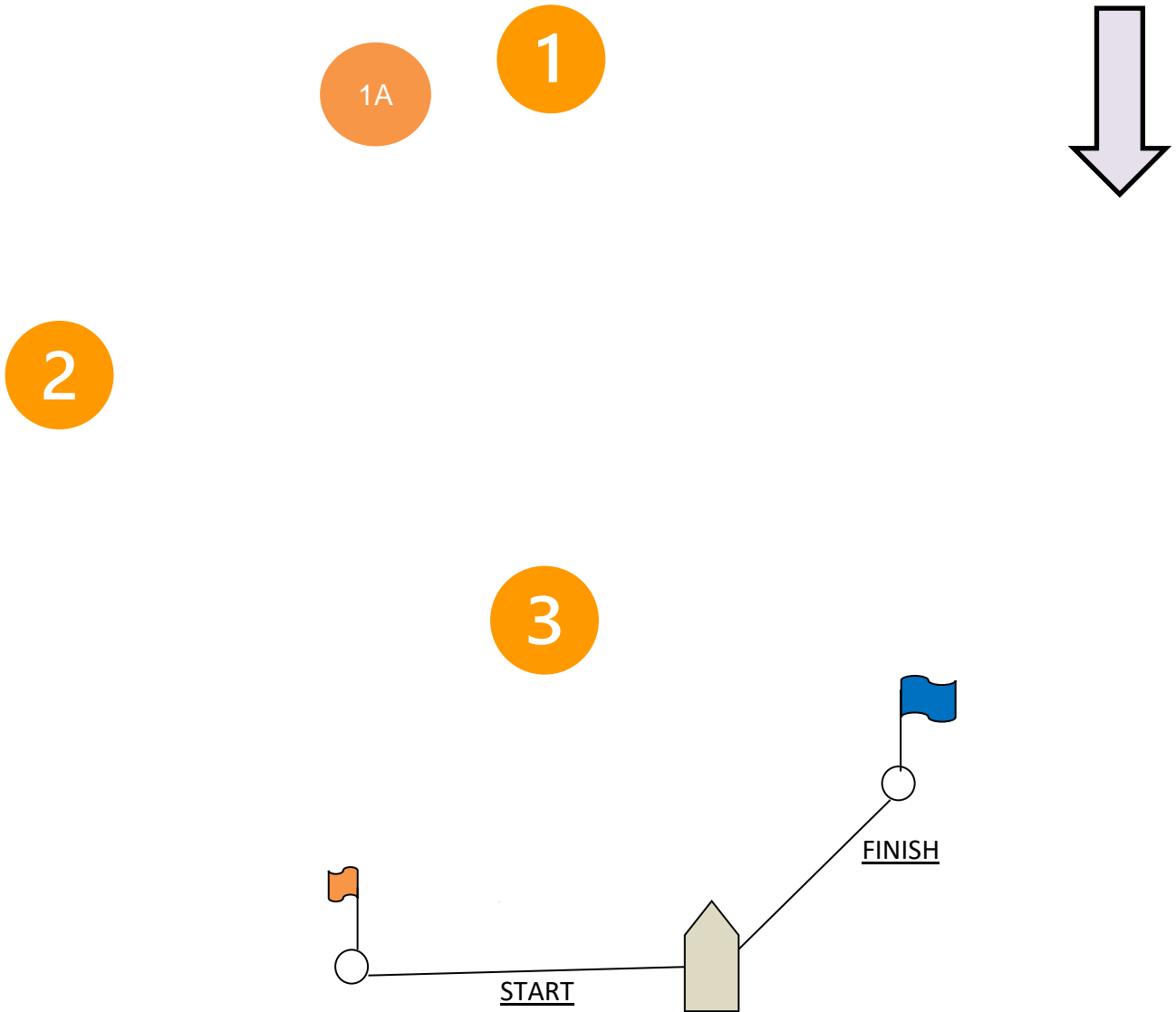
Start & Finish

All marks to Port, except at 2s if laid.



## ADDENDUM 2B

<b>TS</b>	<b>Sausage Triangle with reaching finish</b>
<b>Signal</b>	<b>Mark Rounding Order</b>
<b>ST 2</b>	<b>Start – 1 – 1a – 3 – 1 – 2 – 3- Finish</b>
<b>ST 3</b>	<b>Start – 1 – 1a - 3 - 1 - 2 - 3 – 1 – 3 – Finish</b>
<b>ST 4</b>	<b>Start – 1 – 1a – 3 – 1 – 2 – 3 - 1 – 3 – 1 – 2 - 3 - Finish</b>
<b>ST 5</b>	<b>Start – 1 – 1a – 3 – 1 – 2 – 3 - 1 – 3 – 1 – 2 - 3 – 1 – 3 Finish</b>
<b>ST 6</b>	<b>Start – 1 – 1a – 3 – 1 – 2 – 3 - 1 – 3 – 1 – 2 - 3 – 1 – 3 – 1 – 2 - 3 Finish</b>



One lap is a sausage or a triangle, Mark 1a will be removed after Lap 1. All Marks left to Port.