



TORBAY DINGHY REGATTA 2020

PY Dinghies and Junior Classes

Incorporating: Contender Class Open Meeting

Saturday 3rd to Sunday 4th October

SAILING INSTRUCTIONS

ORGANISING AUTHORITY (OA)

Royal Torbay Yacht Club (RTYC)

These Sailing Instructions cover the RTYC Dinghy Regatta and Contender Class Open Meeting which will be conducted in accordance with HM Government and RYA Guidelines relating to the COVID-19 pandemic that are applicable at the time. Crew restrictions and social distancing rules will apply. Current RYA guidance can be found at www.rya.org.uk/programmes/Pages/return-to-boating.aspx.

1. RULES

- 1.1. The regatta will be governed by the rules as defined in The Racing Rules of Sailing (RRS).
- 1.2. The Equipment Rules of Sailing (to the extent that they apply) will apply.
- 1.3. One design dinghies, shall comply with class rules applicable for 2020.
- 1.4. Competitors should note that the OA implements the RYA Racing Charter and that they will be expected to sail in compliance with the Charter.
- 1.5. RRS 40 shall apply at all times whilst afloat. Flag 'Y' will not be displayed. This changes RRS 27.1, RRS 40, Part 4 Preamble and Race Signals 'Y'

2. NOTICES TO COMPETITORS

- 2.1. Notices to competitors will be posted on the official notice board located in the entrance hall of the Royal Torbay Yacht Club.

3. CHANGES TO SAILING INSTRUCTIONS

- 3.1. Any changes to the Sailing Instructions will be posted before 09:00 on the day it will take effect, except that any change to the schedule of races will be posted by 20:00 hours on the day before it will take effect.

4. SIGNALS MADE ASHORE

- 4.1. Signals made ashore will be displayed on the flagpole at the inshore end of Haldon Pier, adjacent to the slipway.
- 4.2. When the D Flag is displayed ashore with one sound signal tallies may be issued "The warning signal will be made not less than 45 minutes after the course flag is displayed ashore". Boats shall not be launched until this signal is made.
- 4.3. When AP is displayed ashore, 1 minute is replaced with not less than 45 minutes in the race signal AP. This changes the meaning of AP in Race Signals.

5. SCHEDULE

- 5.1. Registration, where competitors in all classes will be issued with COVID 19 information, Tally Numbers and Club admission passes, will be by checking in with the Beachmaster at the Yellow Kiosk on Haldon Pier, Torquay at following times:

Friday	2nd October	16:30 – 18:00
Saturday	3rd October	08:30 – 10:30

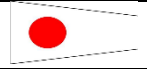
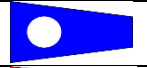
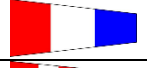


- 5.2. There will be briefings for each Class on the harbourside at 09:30hrs on Saturday 3rd October.
- 5.3. It is intended to run 6 races over two days, with up to 4 races on any one day depending upon weather forecast and conditions.
- 5.4. It is intended to run races back to back.
- 5.5. Warning Signals:

Date	Class	Scheduled time of the first Warning Signal
Saturday 3rd October	Contender Class	10:55
	Non-Asymmetric Dinghies	11:00
	Asymmetric Dinghies	11:05
	Junior Handicap	10:55
Sunday 4th October	Contender Class	10:55
	Non-Asymmetric Dinghies	11:00
	Asymmetric Dinghies	11:05
	Junior Handicap	10:55

- 5.6. Sunday 4th October no warning signal will be made after 15:00hrs.

6. CLASS FLAGS

6.1. The class flags for each class will be as follows:

Contender Class	Numeral Pennant 1	
Non-asymmetric	Numeral Pennant 2	
Asymmetric	Numeral Pennant 3	
Junior Handicap Dinghies (Fast)	Numeral Pennant 4	
Junior Handicap Dinghies (Slow)	Numeral Pennant 5	

7. RACING AREA

7.1. Racing will take place in Torbay (See appendix A)

7.2. There will

be 2 course areas:

- a) The "White course area" designated for the Juniors Handicap Dinghies. This area is to the south of Torquay Harbour. The committee vessel for this course will fly a White flag prior to the starting sequence.
- b) The "Pink course area" for the Contenders, Asymmetric and Non-Asymmetric Classes. This area is towards the centre of Torbay (South East of Torquay Harbour). The committee vessel for this course will fly a Pink flag prior to the starting sequence.

8. THE COURSES

8.1. The course diagrams and configurations are shown in Appendices B, and C.

8.2. The courses and number of laps to be sailed by each class will be displayed on a board on the committee boat.

9. MARKS

9.1. Marks will be as described on the course diagrams.

9.2. The change of course mark will be a yellow inflatable buoy for the Pink course area and an orange inflatable buoy for the White course area.

10. THE START

10.1. The starting line will be between the mast on the Committee Boat displaying an Orange flag at the Starboard end of the start line and a dan buoy displaying an Orange flag at the Port end of the start line.

10.2. Boats whose warning signal has not been made shall avoid the starting area during the starting sequence for all other races.

10.3. A boat that does not start within 4 minutes after her starting signal will be scored 'Did not Start' without a hearing. This changes RRS A4 and A5.

10.4. In the event of a General Recall for one or more classes, the class(es) recalled will start in accordance with RRS 29.2. (Sequence of starts maintained).

11. CHANGE OF THE NEXT LEG OF THE COURSE

- 11.1. To change the next leg of the course the race committee will lay a new mark (or move the finishing line) and remove the original mark as soon as practicable. When in a subsequent change a new mark is replaced, it will be replaced by an original mark. This changes RRS 33.
- 11.2. A change of course will be signalled in accordance with RRS 33.

12. SHORTENED COURSE

- 12.1. Courses may be shortened at any time at the sole discretion of the Race Committee. This changes RRS 32.1

13. THE FINISH

- 13.1. The Finish line will be between the mast on the Committee Boat displaying an Orange flag and adjacent rounding mark as shown in the course diagrams.

14. PENALTIES AND EXONERATION

- 14.1. Boats may touch a mark other than the start and finish mark. A boat shall not manhandle a mark when it results in an advantage. This changes Rule 31.
- 14.2. RRS 44.1 and 44.2 are changed so that only one turn, including one tack and one gybe, are required.

15. TIME LIMITS

- 15.1. There are no time limits. The target time for the first boat in each class will be approximately 45 minutes. Failure to meet the target time will not be grounds for redress. This changes Rule 62.1(a).
- 15.2. Boats failing to finish the race within 15 minutes from the time the first boat in her class sails the course and finishes, will be scored DNF without a hearing. This changes Rule 35, A4, and A5.

16. PROTESTS AND REQUESTS FOR REDRESS

- 16.1. The Exoneration Penalty, Advisory Hearing and RYA Arbitration of the RYA Rules Disputes procedures will be available. Details of the procedures can be found on the RYA website and will be posted on the Official Noticeboard. The exoneration penalty will be 30%.
- 16.2. Protest forms are available outside Reception on the ground floor at RTYC and returned to the Committee Room on the ground floor at RTYC. Protests and requests for redress or reopening of a hearing shall be delivered there within the appropriate time limit.
- 16.3. The protest time limit is 90 minutes after the last boat has finished the last race of the day or the race committee signals no more racing today, whichever is later. This time limit will be extended by 30 minutes for all protests by the race committee relating to incidents observed in the racing area.
- 16.4. Notices will be posted within 30 minutes of the protest time limit to inform competitors of hearings in which they are parties or named as witnesses. Hearings will be held in the protest room, located on the ground floor of the club.
- 16.5. Notices of protests by the race committee, technical committee or protest committee will be posted to inform boats under RRS 61.1(b). This changes RRS 61.1(b).

- 16.6. Breaches of Instructions 1.3,18, 20 and 21 will not be grounds for a protest by a boat. This changes RRS 60.1(a). Penalties for these breaches may be less than disqualification if the protest committee so decides (DP).
- 16.7. On the last day of scheduled racing a request for redress based upon a Protest Committee decision shall be delivered no later no later than 30 minutes after the decision was posted. This changes RRS 62.2.

17. SCORING

- 17.1. One race is required to be completed to constitute a series.
- 17.2. When fewer than four races have been completed, a boat's series score will be the total of her race scores.
- 17.3. When from four to six races have been completed, a boat's series score will be the total of her race scores, excluding her worst score.
- 17.4. All corrected times for handicap classes will be corrected to the nearest second to determine finishing place and with 0.5 seconds rounded up.

18. SAFETY REGULATIONS

- 18.1. Check-out and check-in. The requirements of this instruction are for the safety of the competitors.
- a) The tally control point to check –out and check-in competitors will be located at the top of the slipway from Haldon Pier.
 - b) Tallies comprise numbered wristbands. Numbers will be allocated at Check-In with the Beach Master. Tallies shall be worn visibly, over clothing, on the right wrist at all times whilst afloat.
 - c) All helms shall individually check-out before racing by personally collecting their tally.
 - d) All helms shall individually check-in immediately on returning to shore after racing, but no later than the protest time limit, by returning the tally personally to tally control.
 - e) The race committee may protest a boat for a breach of these safety regulations.
- 18.2. All boats are required to check in with the Race Committee before the warning signal on the first race of each day by passing the starboard side of the race committee boat.
- 18.3. A boat that retires from a race shall notify the race committee as soon as possible.
- 18.4. Competitors shall wear adequate personal buoyancy at all times whilst afloat, except briefly whilst changing or adjusting clothing or personal equipment. Flag Y will not be displayed; this changes RRS 27.1, RRS 40, Part 4 preamble and Race Signals Y
- 18.5. When returning to the harbour after racing, boats may be held outside the harbour entrance to avoid unnecessary congestion on the slipway. All boats are required to follow the instructions of the safety ribs supervising this process.
- 18.6. All Competitors shall comply with the Harbourside COVID-19 Requirements issued by the OA and Torbay Harbour Authority.**

19. PRIZES

19.1. Trophies and prizes will be awarded for each class as per paragraph 13 of the Notice of Race.

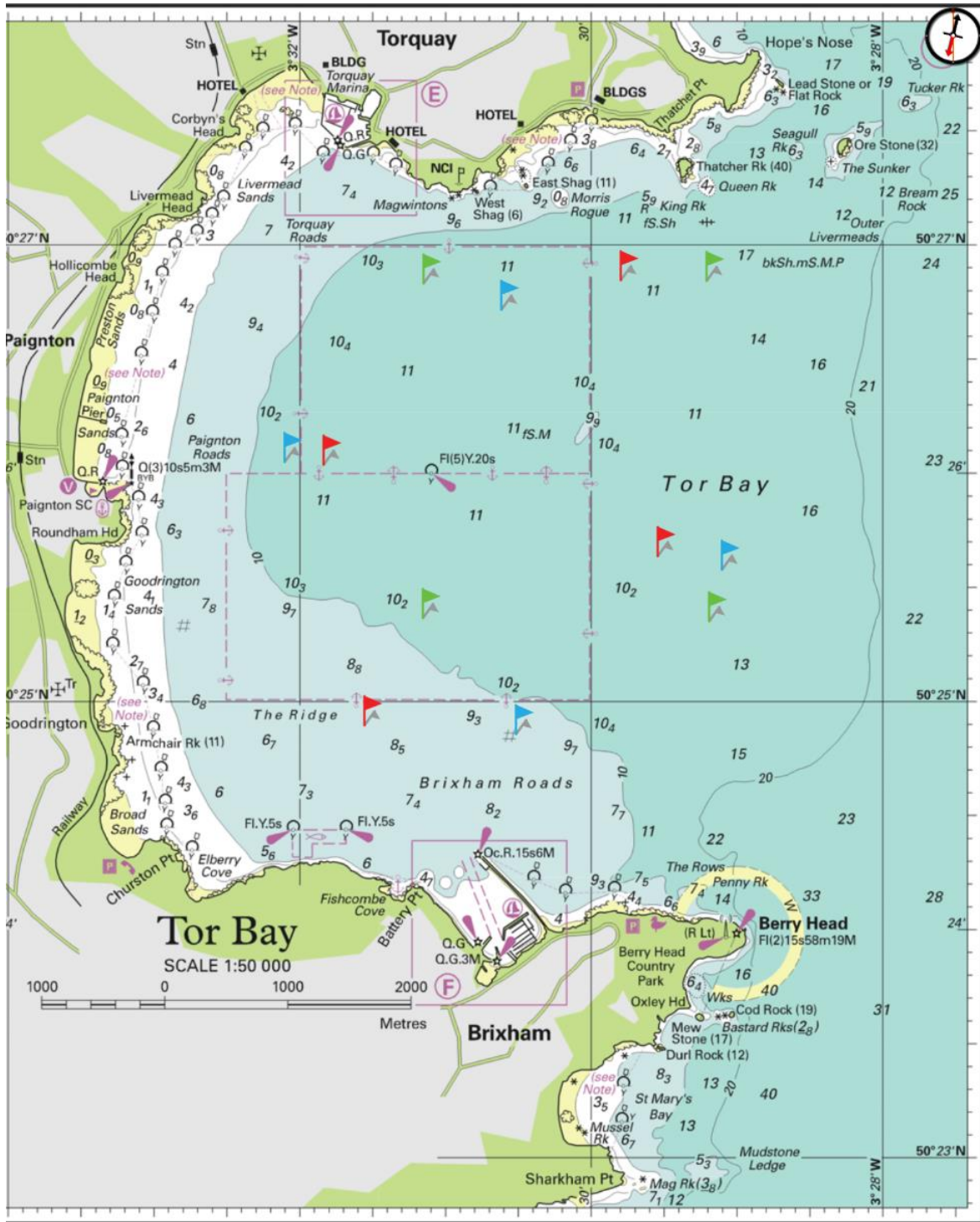
20. RISK AND RESPONSIBILITY STATEMENT

20.1. The Risk and Responsibility Statement as per paragraph 17 of the Notice of Race shall apply to all competitors.

21. INSURANCE

21.1. Each participating boat shall be insured as per paragraph 18 of the Notice of Race.

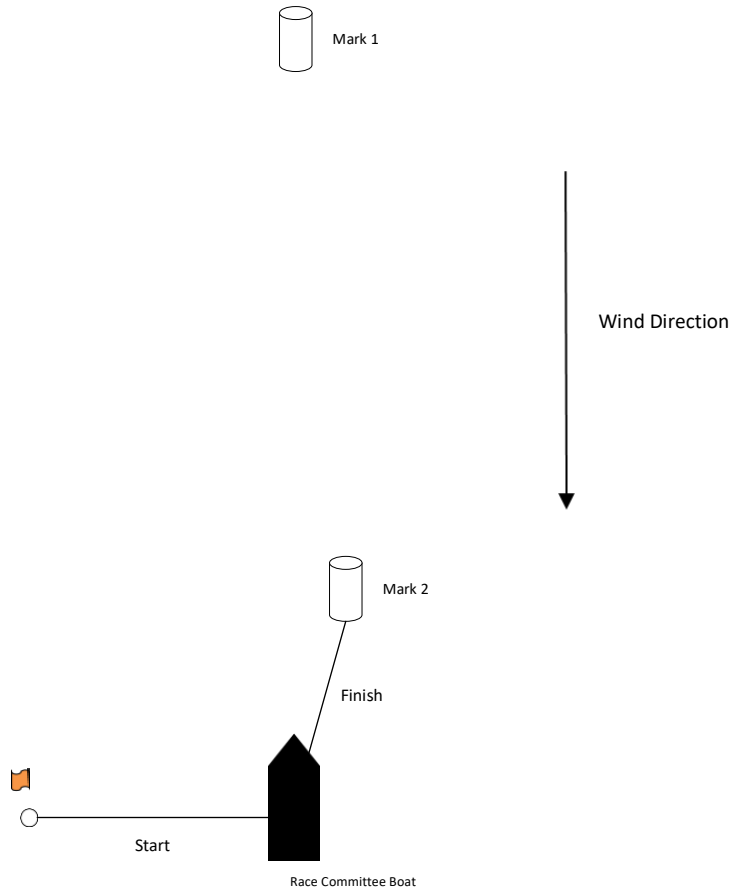
Appendix A



Appendix B

Course 'WL' - Windward / Leeward

(Not to Scale)



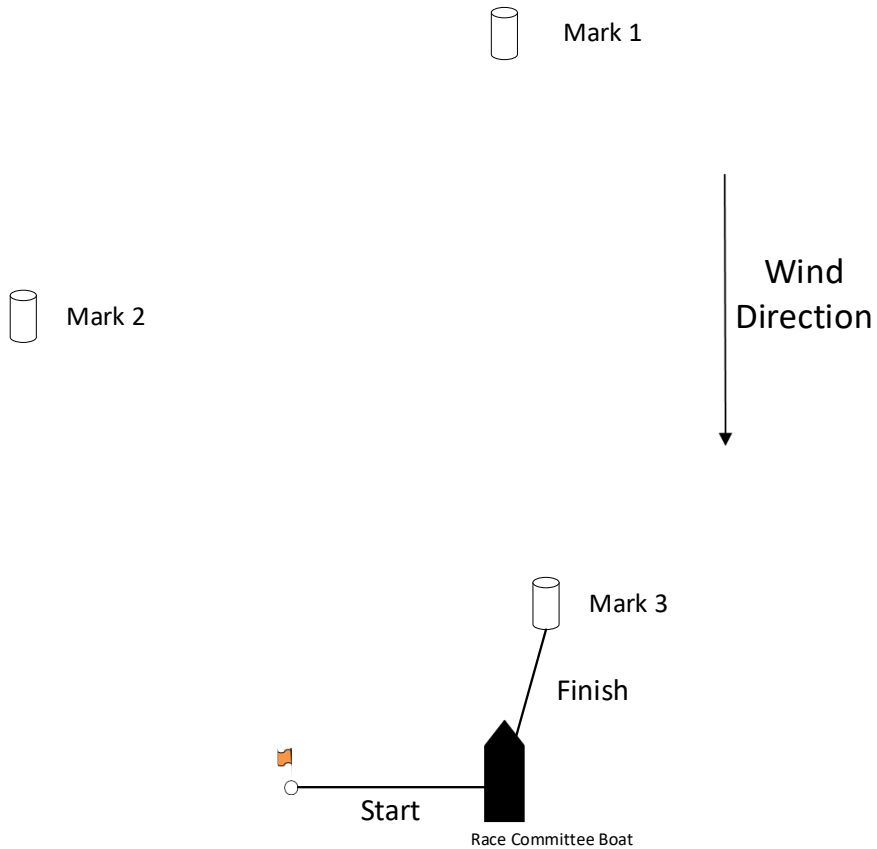
Course	'WL' - Windward / Leeward	
Course Area	Pink Course Area (Orange Marks)	White Course Area (Yellow Marks)
Signal	Mark rounding order	
WL 1	Start -> 1 -> 2/Finish	
WL 2	Start -> 1 -> 2 -> 1 -> 2/Finish	
WL 3	Start -> 1 -> 2 -> 1 -> 2 -> 1 -> 2/Finish	
WL 4	Start -> 1 -> 2 -> 1 -> 2 -> 1 -> 2 -> 1 -> 2/Finish	

1. Finish between committee boat and 2 mark
2. The change of course mark for the Pink Course will be a Yellow inflatable buoy and White Course area will be an Orange inflatable mark.

Appendix C

Course 'TL' - Triangle / Wind

(Not to Scale)



Course	'TL' – Triangle / Windward-Leeward	
Course Area	Pink Course Area (Orange Marks)	White Course Area (Yellow Marks)
Signal	Mark rounding order	
TL 1	Start -> 1 -> 2 -> 3/Finish	
TL 2	Start -> 1 -> 2 -> 3 -> 1 -> 3/Finish	
TL 3	Start -> 1 -> 2 -> 3 -> 1 -> 3 -> 1 -> 2 -> 3/Finish	
TL 4	Start -> 1 -> 2 -> 3 -> 1 -> 3 -> 1 -> 2 -> 3 -> 1 -> 3/Finish	

1. Finish between committee boat and 3 mark
2. The change of course mark for the Pink Course will be a Yellow inflatable buoy and White Course area will be an Orange inflatable mark.