



Royal Torbay Yacht Club Racing Programme 2018

Sailing Instructions (Version 4)

(These Sailing Instructions do not include the Channel Race, Offshore Week and Torbay Royal Regatta which will be covered by separate Sailing Instructions).

Your attention is specifically drawn to the Safety and Insurance clauses in the Notice of Race 10, 12, 16 and 17.

The Organising Authority is the Royal Torbay Yacht Club (RTYC)

1. Rules

- 1.1 Racing will be governed by the rules as defined in The Racing Rules of Sailing 2017-2020.
- 1.2 The prescriptions of the Royal Yachting Association (RYA) apply.
- 1.3 Competitors should note that the Organising Authority implements the RYA Racing Charter and that they will be expected to sail in compliance with it. The charter can be found in the front of the RYA edition of the Racing Rules of Sailing or on the RYA website following the link below.
- 1.4 The Equipment Rules of Sailing to the extent that they apply
- 1.5 The applicable class or/and handicap system rules, including for IRC boats IRC Rules 2018, Parts A, B and C, but excluding rules 21.1.5(d) and (e) and rule 22.4.
- 1.6 Torbay Harbour Bye Laws apply

Note: Links to the relevant websites to read the above Rules are available from the RTYC website <http://rtyc.org/racing-rule-websites/>

2. Entries

- 2.1 Entries and eligibility are to be in accordance with the Notice of Race.
- 2.2 An exception is the Crews Race where eligibility shall be further limited to boats helmed by a crew member who has crewed in not less than 50% of the races that the boat which they are going to helm has competed in during 2018. Crews are not eligible if they have previously helmed in more than 30% of the races that the boat has competed in during 2018. This race is a stand-alone race and does not count towards a series.

3. Notices to Competitors

- 3.1 Notices to competitors will be posted on the Notice Board located in RTYC Clubhouse and on rtyc.org.

4. Changes to Sailing Instructions

- 4.1 Any changes to Sailing Instructions will be posted at least 24 hours before the first race affected by the change. IC Flag "L" will be displayed ashore or on the committee boat before the warning signal of the first race for each class to which the change in Sailing Instructions applies.

5. Signals made Ashore

- 5.1 Signals made ashore will be displayed from the flagpole at the base of Haldon Pier.

6. Schedule of Races

- 6.1 Races are scheduled in the Club Racing Programme 2018 available on rtyc.org or in the club yearbook available from the club office.

7. Schedule times of Warning Signals, Class Flags and Time Limits for Series Racing

- 7.1 Saturday Series Racing (except Winter Series).

Sportsboat handicap and SB20 classes	1355	Numeral Pennant 2
PY Dinghy handicap class	1400	IC Flag "D"
Junior handicap classes	1405	RS Feva Class Flag (Fast) & IC Flag "V" (Sports)

Time Limit 1 hour.

The start time for winter series to end of 2018 will be 1 hour earlier with warning signal at 1255 for Sportsboat and SB20 handicap classes, 1300 for PY Dinghy handicap class and 1305 for Junior handicap class.



Royal Torbay Yacht Club Racing Programme 2018

Sailing Instructions (Version 4)

(These Sailing Instructions do not include the Channel Race, Offshore Week and Torbay Royal Regatta which will be covered by separate Sailing Instructions).

At the sole discretion of the race officer, two or more races may be held. The warning signal for the next race will be displayed as soon as possible after the finish of the previous race. Only the first two races will count towards series points.

Time Limit for the second race is 1 hour.

7.2 Sunday Series Racing

IRC Class	0955	Numeral Pennant 1
Cruiser Class	1000	Numeral Pennant 3
Time Limit 1300 hours		

7.3 Wednesday Evening Series Racing

IRC	1815	Numeral Pennant 1
Cruiser Class	1815	Numeral Pennant 3
Sportsboat handicap & SB20 One Design classes	1820	Numeral Pennant 2
PY Dinghy Class	1820	IC Flag "D"
Junior handicap classes	1825	RSFeva Class flag (Fast) IC Flag "V" (Sports)
Time Limit 2030 hours		

In September all times will be 15 minutes earlier.

8. Special Races

8.1 Pursuit Race for Bill's Goblet, Start Times and Time Limits.

Note: - Entrants will be handicapped by variation in starting times. A list of starting times will be posted on the RTYC Notice Board by noon on Sunday before. Additional copies will be available to competitors in the Clubhouse.

There is no entry fee for this race, but a collection will be made in aid of the RNLI after racing.

1425 – Red or Green flag with sound signal (warning signal).

1426 – Flag P with sound signal.

1429 – P flag lowered.

1430 – Red or Green momentarily dipped and sound signal.

Thereafter 30 seconds before the next whole minute the appropriate handicap start time will be displayed on boards on the Committee Boat and removed at the exact time (for example a handicap start time of 1453 – "53" on boards will be displayed for 30 seconds and at the actual start time the "3" will be removed). There will be no recalls and premature starters will be penalised by 5 minutes for every minute or part of a minute by which they start early.

Note: - It is intended that race length shall reflect the median handicap boat sailing approximately 100 minutes. The Committee Boat will display flag "S" with two sound signals to signify that the finishing line has been set.

8.2 The Smugglers Run

This race is for cruisers with an IRC rating or SWYTCS Certificate.

Qualifying boats will start as one class with warning signal (Numeral Pennant 1) at 0955. Starting procedure will be as clause 12 of Sailing Instructions. The course will be from the start to a mark, identified by VHF Channel 72, from the committee boat, together with whether it is to be left to port or starboard. Then to RTYC mark 3 (leave to port), then to the Teignmouth Sewer Outfall mark (approx. 50°31.97'N, 3°27.76'W), (leave to port), then to RTYC mark 2 (leave to starboard) and then to the finish line between the RTYC flag pole at the base of Haldon Pier and outer distance mark Green (approx. 50°27.29'N, 3°31.72'W). All boats will be required to take their own finishing time and advise this time to RTYC Office within 24 hours of finishing the race.

Time Limit 5 hours.



Royal Torbay Yacht Club Racing Programme 2018

Sailing Instructions (Version 4)

(These Sailing Instructions do not include the Channel Race, Offshore Week and Torbay Royal Regatta which will be covered by separate Sailing Instructions).

- 8.3 **New Year's Day Race** – Scheduled time of Warning Signal, Class Flag and Time Limit.
- | | | | |
|------------------------------------|-------------|--------------------------|--------------------|
| SWYTCS Certificate Required | 1055 | Numeral Pennant 1 | Time Limit 2 hours |
| All other classes | 1100 | Numeral Pennant 5 | Time Limit 2 hours |

9. Race Area

- 9.1 The racing area will normally be in Torbay as shown in Appendix 1 Course Card 2018. Exceptions may occur for coastal races for IRC and Cruiser Classes.

10. Courses and Marks

- 10.1 Details of marks for can be found in Appendix 1 Course Card 2018.
- 10.2 The mark number, or letter, will be displayed on a board in the order in which they are to be rounded or passed
- 10.3 IRC & Cruiser Classes: This course may be broadcast by VHF radio on Channel 72.
- 10.4 Junior handicap class may receive verbal instructions from an attendant safety boat. This changes SI's 10.2, 10.6, 10.7 and Rule 41 Outside Help
- 10.5 The first leg of the course is an intended windward leg for Committee Boat starts.
- 10.6 A Red flag displayed on the committee boat will signify that all marks are to be left to PORT. A Green flag will signify that all marks are to be left to STARBOARD. If neither Red nor Green flags are displayed the marks to be rounded will be shown on a course board with a (P) or (S) to signify that they are to be left to Port or Starboard.
- 10.7 The number of rounds to be sailed will be displayed on a board on the committee boat. Each time a boat rounds the leeward mark a round is completed. The course may be shortened for any reason at the discretion of the Race Committee. This changes RRS rule 32.1.
- 10.8 Course instructions for fixed line starts will be broadcast by VHF radio on Channel 72.

11. Areas that are Obstructions

- 11.1 The entirety of the Scallop Nursery beds, forming an imaginary box including the yellow beds marker buoys (flashing Y.2.5s) approximately 0.5nm south of Thatcher Rock, are an obstruction. This obstruction can be passed on any side. The coordinates that make up the corners of the bed are:
- 50°26.700'N 03°29.690'W 50°26.865'N 03°29.690'W
50°26.865'N 03°29.170'W 50°26.700'N 03°29.170'W

12. The Start

- 12.1 If a Blue flag is displayed from the RTYC Flag Pole at the base of Haldon Pier 30 minutes before the first warning signal of the day then the start will be from the flag staff at Haldon Pier.
If a Blue flag is not displayed from the RTYC Flag Pole at the base of Haldon Pier then the start will be from a committee boat.
- 12.2 Races shall be started by using rule 26 with the warning signal made 5 minutes before the starting signal. Times shall be taken from the visual signals; absence of a sound signal shall be disregarded. The warning signal for each succeeding start shall be made with the starting signal of the preceding class.
- 12.3 The Starting Line will be between the mast on the committee boat displaying an Orange flag and a nearby mark or a white danbuoy with an Orange flag (Mark A). If a BLUE flag is displayed from the RTYC Flag Pole at the base of Haldon Pier then the start line shall be between the pole at Haldon Pier displaying an Orange flag and outer distance mark R or G as appropriate to course indicated.
- 12.4 The committee boat may be positioned at either end of the starting line at the discretion of the Race Committee.
- 12.5 Boats whose preparatory signal has not been made shall keep clear of the starting area and of all boats whose preparatory signal has been made.
- 12.6 A boat shall not start later than 5 minutes after her starting signal.



Royal Torbay Yacht Club Racing Programme 2018

Sailing Instructions (Version 4)

(These Sailing Instructions do not include the Channel Race, Offshore Week and Torbay Royal Regatta which will be covered by separate Sailing Instructions).

12.7 For Sunday races only, these may at the discretion of the Race officer be started using an alternative method as communicated by vhf on the day.

13. Change of Course after the Start

13.1 To change the next leg of the course, the Race Committee will signal a change of course by displaying Flag C over the class flag(s) for the classes affected by the change, accompanied by repetitive sound signals. If no class flag(s) is displayed the change of course will apply to all classes. The new course to be sailed will be displayed on the blackboard on the committee boat indicating the marks to be rounded and the order in which they are to be passed and whether they are to be left to port or starboard. No compass bearing of the next leg or +/- will be displayed. The change of course will also be broadcast on VHF marine channel 72. This changes Rule 33.

14. The Finish

14.1 The finishing line will be between the mast on the committee boat displaying an Orange flag and a mark of the course, or if a Blue flag is displayed from the RTYC Flag Pole at the base of Haldon Pier then the finish line shall be between a pole on Haldon Pier displaying an Orange flag and an outer distance mark R or G as appropriate to course indicated.

Boats may be asked to self-time their finish. If doing so please record time of finish and boats in-front and behind. Pass this information to the Race officer within 24 hours

15. Alternative Penalties

15.1 For the Sports Boat handicap and SB20 One Design classes RRS 44.1 and 44.2 are changed so that only one turn, including one tack and one gybe, is required, except that if the infringement is against a boat competing in another class a two turn penalty must be taken.

16. Time Limit

16.1 If one boat sails the course as required by RRS rule 28.1 and finishes within the time limit, the time limit shall be extended by 30 minutes for all boats in the same class.

16.2 If no boat in a class has finished within the time limit, but at least one round of the course has been completed the result for that class may be decided on the positions of boats at completion of the last complete round.

16.3 When a boat ceases to race before expiry of the time limit, and no other boat of the same class completed a further round, the boat that has ceased to race will be recorded as finishing in accordance with Sailing Instructions 15.2.

17. Protests and Requests for Redress

17.1 Protests for IRC class and Cruiser Class shall be delivered to the Club Office within 24 hours of the finish of the race. The protest time limit for all other classes is 2 hours after the last boat has finished the last race of the day.

17.2 The date and time of Protest Hearings will be notified to all parties as soon as possible after the lodging of a protest form.

17.3 The RYA Arbitration of the RYA Rules Disputes procedures shall apply (for information, go to www.rya.org/uk/go/rulesdisputes). The outcome of an RYA Arbitration can be referred to a protest committee, but an arbitration cannot be reopened or appealed. This changes RRS Part 5 section B, Rule 63.1

18. Scoring

18.1 Scoring will be in accordance with paragraph 10 of the Notice of Race.



Royal Torbay Yacht Club Racing Programme 2018

Sailing Instructions (Version 4)

(These Sailing Instructions do not include the Channel Race, Offshore Week and Torbay Royal Regatta which will be covered by separate Sailing Instructions).

19. Miscellaneous

- 19.1 When reference is made in these Sailing Instructions to flags and pennants the Race Committee may use painted boards in their place.
- 19.2 The Race Committee will use VHF Radio Channel "72" for communication with competitors when appropriate and will, when possible, provide change of course information. Clarification by the Race Committee to individual competitors on course changes using Channel "72" shall not be deemed to comprise outside help. This changes rule 41.

20. Prizes

- 20.1 Trophies and/or prizes will be awarded in accordance with paragraph 15 of the Notice of Race.
- 20.2 Except where stated in Special Sailing Instructions trophies will only be awarded to members of RTYC.

21. Special Safety Instructions

- 21.1 A young competitor shall be any person under the age of 18 on the 1st January 2018 who intends to race on a boat in any race to which these Sailing Instructions apply and on which there is no crew member over the age of 18 years on 1st January 2018.
- 21.2 No young competitor shall leave the harbour at any time after 30 minutes before the warning signal of the race in which he/she intends to compete, unless a safety boat is under way and the boat and crew have been checked by the Beach Master.
- 21.3 No PY Dinghy handicap class shall leave the harbour before the warning signal of the race in which she intends to compete during the Winter Series unless a rescue boat is underway.

22. Further Information.

For further information, please contact
Royal Torbay Yacht Club
12 Beacon Terrace
Torquay
TQ1 2BH
Tel: 01803 292006
Email: admin@rtyc.org or sailing@rtyc.org



Royal Torbay Yacht Club Racing Programme 2018

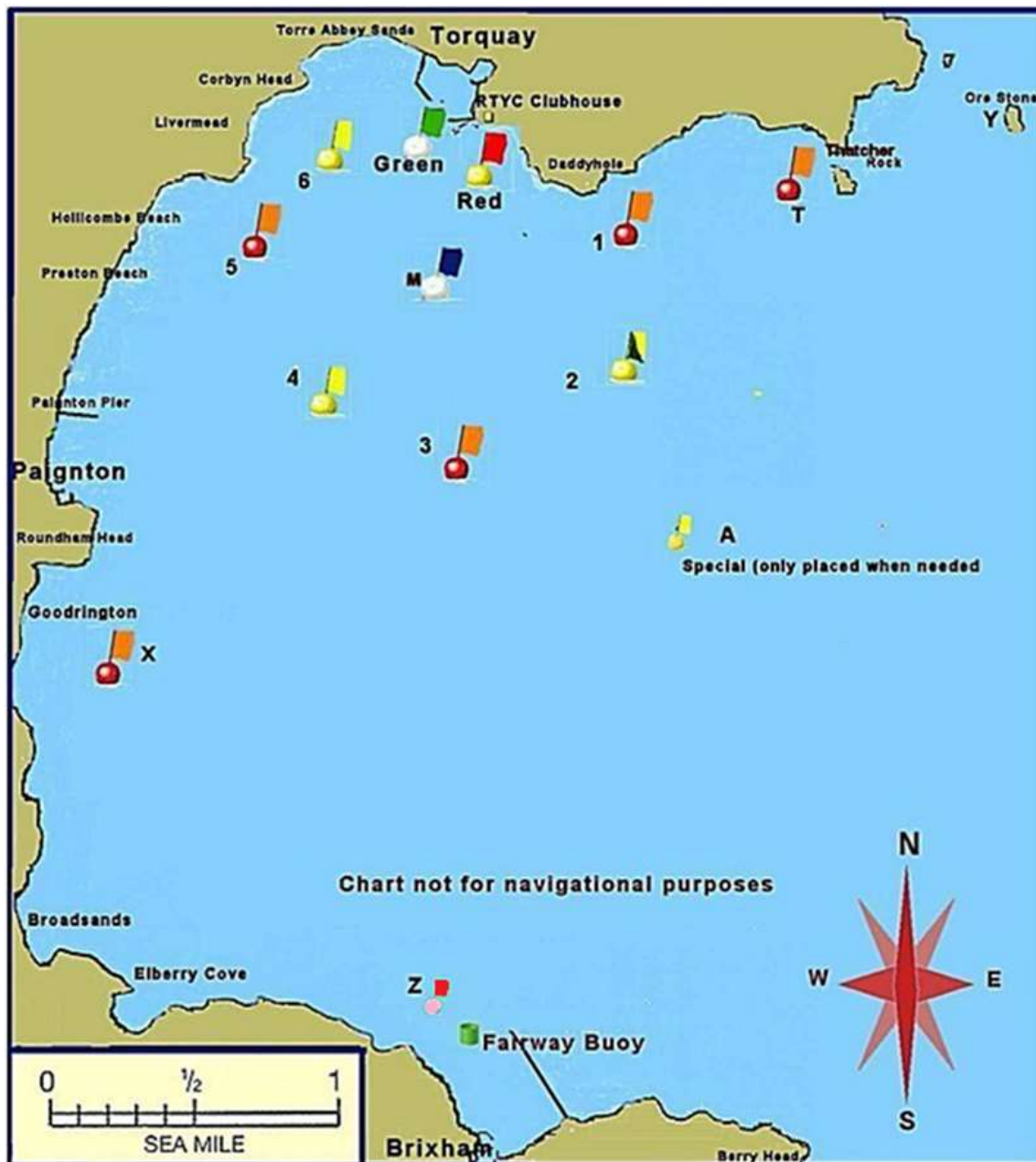
Sailing Instructions (Version 4)

(These Sailing Instructions do not include the Channel Race, Offshore Week and Torbay Royal Regatta which will be covered by separate Sailing Instructions).

APPENDIX 1

COURSE CARD 2018

Buoy positions – The Diagram below is pictorial only.





Royal Torbay Yacht Club Racing Programme 2018 Sailing Instructions (Version 4)

(These Sailing Instructions do not include the Channel Race, Offshore Week and Torbay Royal Regatta which will be covered by separate Sailing Instructions).

Club Racing Mark Positions 2018 (Note New Positions)

Green	50 27.29	003 31.72	White buoy	Green flag
Red	50 27.18	003 31.39	Yellow buoy	Red flag
1	50 26.97	003 30.71	Red buoy	Orange flag
			Yellow buoy	Yellow/Black
2	50 26.58	003 30.83	flag	
3	50 26.35	003 31.44	Red buoy	Orange flag
4	50 26.55	003 32.17	Yellow buoy	Yellow flag
5	50 26.86	003 32.44	Red buoy	Orange flag
6	50 27.16	003 32.21	Yellow buoy	Yellow flag
A	Laid mark		White buoy	Orange flag
M	50 26.74	003 31.42	White buoy	Blue flag
T	50 27.25	003 29.74	Red buoy	Orange flag
W	50 28.10	003 25.97	West Cardinal Mark	
X	50 25.29	003 32.82	Red buoy	Orange flag
Y	50 27.40	003 28.17	Orestone Rock	
Z	50 24.42	003 31.33	BYC pink buoy	Red flag